

2025
USA/CANADA



BLÅKLÄDER
WORKWEAR

Since 1959, Blaklader has been designing quality functional workwear for the world's toughest jobs. We've spent decades refining and crafting our garments to perform above and beyond under the harshest conditions. When you put on a pair of Blaklader work pants, you're putting on the culmination of all of our innovation, workmanship, and integrity. Quality is our heritage, and we take it very seriously.

When it's pouring down rain but you have to hit that deadline... quality matters. When it's freezing cold, and the wind chill is biting, but that trench won't dig itself...quality matters.

Whether you're climbing a powerline and trusting your life to a safety rating...or trying to stay visible on the roadside in the dead of night, our goal is that you start and end your day feeling safe and confident, so you don't have to second guess your gear...

WHEN QUALITY MATTERS



BLAKLADER.COM



PAGE INDEX

FLAME RESISTANT	PAGE 10–15
HI-VIS	PAGE 16–27
RAIN	PAGE 28–29
PANTS/SHORTS.....	PAGE 30–35
PAINTER.....	PAGE 36–39
JACKETS/VESTS	PAGE 40–45
SHIRTS/SWEATSHIRTS	PAGE 46–47
PROFILE	PAGE 48–49
WOMEN'S	PAGE 50–55
SHOES	PAGE 56–59
BASE LAYER	PAGE 62–63
ACCESSORIES.....	PAGE 64–70

HOW TO READ THE PRODUCT NUMBER

Our product number has a total of **12 digits**. Every **4-digit** sequence represents a specified value.
To order a product you need to know all 12 digits to get the right material and color. See below.

1636 1550 8900

First 4 digits are the product/
model number.

1636 1550 8900

Second 4 digits are material.

1636 1550 8900

Last 4 digits are color.

SYMBOL GUIDE

Blaklader workwear is made with specific functionalities to make your job easier. Look out for the symbols below to help you figure out exactly how each garment is built for work.



FLAME
RESISTANT



WATER-
PROOF



ANSI/ISEA
HI VIS



CSA Z96-15
HI VIS



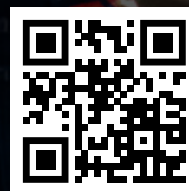
SPF-40



TOMORROW IS **EVERYTHING**

A growing population. Shared, and limited, resources. This makes our responsibility clear: to strive every day to help reduce consumption and increase long-term use, with future generations in mind.

We believe in sustainability. **Because tomorrow is everything.**



READ FULL
REPORT HERE

EXPERIENCE THE DIFFERENCE

The Blåkläder experience is all about delivering solutions that are comfortable, flexible and easy to use without compromising on design and looks. The four cornerstones of our production line are functionality, quality, design and sustainability. We never compromise on these. In fact, it's the base for our entire brand, and you can always rely on us to maintain the highest standards for all product features.

QUALITY AND FUNCTION

We advocate that style and comfort are essential factors in making great workwear. With Blåkläder, you get all of that, and the synergy is amazing. We choose the most durable fabrics and components. Our clothes are equipped with triple seams, Cordura® reinforcement, and double-layer fabrics in exposed areas. We even have a lifetime warranty on our seams.

GOODBYE ORDINARY

We believe that having the right tool for the job is incredibly important. This is widely accepted in the trades, but often overlooked when it comes to workwear. Tough jobs call for tough tools, so don't settle.

1622 - THE GENUINE REBEL

A durable, 4-way stretch craftsman pant with tons of functionality! These pants are BUILT FOR WORK with removable utility pockets, foam kneepad inserts, Stretch fabric and Cordura® reinforcement. This is the right tool for any job





OUR SERVICE

The visibility of a brand is more important than ever. Our inhouse branding service enables you to give your workwear a unique and personal profile. Our team will work with you to develop selected items and designs for you and your team. Then easily order branded garments through your portal anytime a team member needs new gear.

HEAT TRANSFER

A cost-effective way to make your company logo visible. Heat transfer is easy to apply and works on waterproof clothing and smaller pockets.

BLÅKLÄDER[®]

WORKWEAR



SCAN TO
LEARN MORE

BUCKLE UP AND ENJOY THE RIDE

WE'LL KEEP THE CAR RUNNING, YOU DRIVE.

When you trust your workwear to Blaklader, you should always feel confident that you have a fast, efficient and resilient team at your side. Today we're proud to manage a team that delivers high-tech solutions, smart logistics, smooth and efficient distribution, as well as rigorous control of our manufacturing units.



PRODUCT
DEVELOPMENT



PURCHASING
& SOURCING



WAREHOUSE
& LOGISTICS



PRODUCTION



SALES &
MARKETING



DISTRIBUTORS



SUPPORT



Combining an extremely competent sales force and having our own production helps us control every step in our value chain.



LOCAL SUPPLY **GLOBAL SUPPORT**

As a global brand we understand the struggles of lead times and shipping logistics. We've built our supply chain from the ground up so we can keep your gear readily available. With warehouses in the U.S. and Canada, we are able to fill most orders within days so you can rest easy knowing your favorite work gear isn't far away.



01

FLAME RESISTANT

A man wearing a white hard hat with 'LiftPower' on it, safety glasses, a dark blue long-sleeved shirt, dark blue pants, and a complex orange and black safety harness is standing on a metal staircase. He is looking directly at the camera. Behind him is a large, arched opening in a light gray wall, possibly a tunnel or a large industrial structure. The staircase has metal railings and steps.

"AT UPTOWER, WE HAVE AN **UNMATCHED FOCUS ON PROVIDING SAFE HIGH-QUALITY** SERVICE AND TRAINING. TO ACCOMPLISH THIS TASK, WE **CHOOSE THE HIGHEST QUALITY SAFETY GEAR AND WORKWEAR.** OUR CHOICE IS BLAKLADER. THEIR GEAR IS COMFORTABLE, IT'S DURABLE, IT LOOKS PROFESSIONAL, AND **OUR TECHNICIANS LOVE TO WEAR IT!**"

- Jordan Bielefeld
OWNER at UPTOWER



THE FLAME RESISTANT COLLECTION FROM BLÅKLÄDER

Your safety is the most important thing on the jobsite.

Our garments are built around this mindset, but unlike many manufacturers, we strive for more!

We design our safety gear to be more comfortable, more functional, and more durable than any other safety workwear on the market. See the Blåkläder difference for yourself!

Established in 1959, our company has been challenging the status quo in workwear for over 60 years! We've worked with some of the largest construction companies in the world and we've changed the way they work. Are you ready to see what it's all about?

FLAME RESISTANT PROTECTIVE GARMENTS FOR HIGH-RISK WORK

SOLAR
POWER

WIND
POWER

CO-OP/
UTILITIES

NFPA 70E

NFPA 70E

NFPA 70E, titled Standard for Electrical Safety in the Workplace, is a standard of the National Fire Protection Association (NFPA). The document covers electrical safety requirements for employees. The NFPA is best known for its sponsorship of the National Electrical Code (NFPA 70).

ASTM F1506

ASTM F1506 is the Standard Performance Specification for Flame Resistant and Arc Rated Textile Materials for Wearing Apparel for Use by Electrical Workers Exposed to Momentary Electric Arc and Related Thermal Hazards.

NFPA 2112

NFPA 2112, entitled Standard on Flame-resistant Garments for Protection of Industrial Personnel Against Flash Fire, is a national consensus standard which sets the minimum performance requirements for garments which are to be worn by workers who may face the hazard risk of exposure to a flash fire in their workplace.



4786

MULTINORM SHELL JACKET

1535 50% modacrylic, 32% cotton, 9% polyamide, 8% polyester, 1% other fibers, ripstop, flame resistant, laminated, 8, 26 oz
3389 Yellow Hi-viz/Navy blue
 XS-5XL

The 4786 was not crafted for the faint of heart. It was built for the bold, the courageous, the determined. If that describes you, then welcome to the best jacket you will ever own. The Multinorm Shell Jacket combines wind and waterproof design with comfortable and durable materials that will shelter you from the harshest conditions, but we didn't stop there. It also boasts a CAT 3 FR certification so you can rest easy knowing you will be protected visible and comfortable.

CERTIFICATION: ANSI/ISEA 107-2020 Type R class 3 FR, ASTM F1891-2019, CSA Z462-2018, ATPV Rating: 32 cal/cm², CAT 3, NFPA 70E-2018



1612

FR VISIBILITY PANT

1514 75% cotton, 24% polyester, 1% antistatic, twill, flame resistant antistatic, 10, 3 oz
8933 Navy blue/Yellow Hi-viz
 30:28-50:32

Our classic FR pants, with some added visibility. This trusted pant design features tons of pockets, durable materials, triple stitching, and kneepad pockets for our foam kneepad inserts. Function, durability, and safety. What more could you want?

CERTIFICATION: ASTM F1506-2020, CSA Z462-2018, ATPV Rating: 11 cal/cm², CAT 2, NFPA 70E-2018



NEW!

1687

MULTINORM SHELL PANT

1535 50% modacrylic, 32% cotton, 9% polyamide, 8% polyester, 1% other fibers, ripstop, flame resistant, laminated, 8, 26 oz
3389 Yellow Hi-viz/Navy blue
 XS-5XL

The 1687 was built for the bold, the courageous, the determined. Made as a companion to the 4786 Multinorm Shell Jacket, this pant combines wind and waterproof design with comfortable and durable materials that will shelter you from the harshest conditions, but we didn't stop there. It also boasts a CAT 3 FR certification so you can rest easy knowing you will be protected visible and comfortable.

CERTIFICATION: ANSI/ISEA 107 Class E, not Hi-Vis apparel when worn alone, should be combined with Hi-Vis classified uppers, ASTM F1891; ATPV 32 cal/cm², ASTM F2733, CSA Z462; Compliant with garment applicable requirements, Arc-Flash PPE Category 3, NFPA 70E; Compliant with garment applicable requirements, Arc-Flash PPE Category 3



1636

FR PANTS

1550 88% cotton, 12% polyamide, twill flame resistant, 10 oz
2700 Stone, **8900** Navy blue, **9100** Light grey
 30:28-46:34

The 1636 FR Pants are built for work. Trusted by technicians from many industries, these pants have been put through the toughest test and they keep on going. If you want to level up your pant game, this is where you start.

CERTIFICATION: ASTM F1506, CSA Z462-2021, ATPV rating: 13 cal/cm² CAT 2, NFPA 2112-2023, NFPA 70E-2021



1676

FR PANTS WITHOUT UTILITY POCKETS

1550 88% cotton, 12% polyamide, twill flame resistant, 10 oz
2700 Stone, **8900** Navy blue, **9100** Light grey
 30:28-46:34

The 1676 FR Pant is built for versatility in work. Don't need all the pockets? We've got you covered. The 1676 work pant comes complete with a gusseted crotch for maneuverability and comfort as well as the utility pockets on both sides.

CERTIFICATION: ASTM F1506, CSA Z462-2021, ATPV rating: 13 cal/cm² CAT 2, NFPA 2112-2023, NFPA 70E-2021



1686

FR VISIBILITY PANT

1550 88% cotton, 12% polyamide, twill flame resistant, 10 oz
8900 Navy blue
 30:28-46:34

This pant is all the comfort and function of the 1676 FR Pant with some added visibility. Built for versatility and safety, like all our FR products, it's been tested and is compliant with NFPA 70E for your protection. The 1686 work pant comes complete with a gusseted crotch for maneuverability and comfort as well as the tool pockets on both sides.

CERTIFICATION: ASTM F1506, CSA Z462-2021, ATPV rating: 13 cal/cm² CAT 2, NFPA 2112-2023, NFPA 70E-2021





3491

FR HENLEY (13CAL)

1770 97% cotton, 3% elastane, rib, flame resistant, 7oz

8900 Navy blue

XS-4XL

Lightweight, flame resistant and stylish...sound too good to be true? Not with Blaklader. We're taking our FR gear to the next level of comfort and protection With this flame resistant CAT 2 Henley. This classic style is both comfortable and protective. It's perfect for the job site, but don't be surprised if you find yourself wearing it on the weekend as well.

CERTIFICATION: ASTM F1506-2018, CSA Z462-2018, ATPV rating: 13 cal/ cm² CAT 2, NFPA 2112-2018, NFPA 70E-2018



3491

FR LIGHT HENLEY (9.6CAL)

1775 100% cotton, interlock, flame resistant 6.5 oz

2700 Stone, **8100** Light blue, **8900** Navy blue, **9100** Light grey

XS-4XL

Our Light Henley is a version of our classic Henley, made from an all-new fabric that offers a little more breathability and comfort, but don't let that fool you. It's still CAT 2 and durable enough for a long life on or off the job. flame resistant, and stylish...sound too good to be true? Not with Blaklader.

CERTIFICATION: ASTM F1506, CSA Z462-2021, ATPV Rating: 9.1cal/cm², CAT 2, NFPA 2112-2023, NFPA 70E-2021



3493

FR LONG SLEEVE T-SHIRT (13CAL)

1770 97% cotton, 3% elastane, rib, flame resistant, 7oz

8900 Navy blue

XS-4XL

Our classic FR long sleeve shirt is made from a soft 13 cal rated fabric to offer more protection and highest comfort. Flame resistant protection is always improved with layering. With this CAT 2 rated long-sleeve T-shirt layering is not only possible, it's comfortable. Now whether you're layering for extra protection or just working light, you can trust that We've got your back.

CERTIFICATION: ASTM F1506-2018, CSA Z462-2018, ATPV rating: 13 cal/ cm² CAT 2, NFPA 2112-2018, NFPA 70E-2018



3493

FR LIGHT LONG SLEEVE T-SHIRT (9.6CAL)

1775 100% cotton, interlock, flame resistant 6.5 oz

2700 Stone, **8100** Light blue, **8900** Navy blue, **9100** Light grey

XS-4XL

For those warmer days when a heavy fabric is less than ideal, we created a lighter FR option. Flame resistant protection is always improved with layering. With this CAT 2 rated long-sleeve T-shirt layering is not only possible, it's comfortable. Now whether you're layering for extra protection or just working light, you can trust that We've got your back.

CERTIFICATION: ASTM F1506, CSA Z462-2021, ATPV Rating: 9.1cal/cm², CAT 2, NFPA 2112-2023, NFPA 70E-2021





3276

FR COLLARED SHIRT

1551 88% cotton, 12% polyamide, twill 3/1, flame resistant, 7 oz

8900 Navy blue
S-4XL

Whether you are climbing a wind turbine tower, fixing an air conditioning unit or helping restore power to a community, the Blaklader FR shirt is for you. The perfect complement to our FR pants, completing your professional uniform. The 3276 meets NFPA 70E and CAT2 requirements in a comfortable 7 oz. material. Be sure to add your logo and name, so nobody steals it from you!

CERTIFICATION: ASTM F1506-2018, CSA Z462-2018, ATPV Rating: 11 cal/cm², CAT 2, NFPA 2112-2018, NFPA 70E-2018



3279

FR BUTTON-UP SHIRT

1551 88% cotton, 12% polyamide, twill 3/1, flame resistant, 7 oz

2700 Stone, **8100** Light blue, **8900** Navy blue, **9100** Light grey
S-4XL

Professional meets comfort in this Button-up Collared FR shirt. It's a great complement to our FR pants, completing your uniform or just to wear on the weekend. The 3279 meets NFPA 70E and CAT2, 2112 requirements in a comfortable 7 oz. material. It's truly a must-have.

CERTIFICATION: ASTM F1506, CSA Z462-2021, ATPV Rating: 11 cal/cm², CAT 2, NFPA 2112-2023, NFPA 70E-2021



3492

FR HOODIE

1763 44% lyocell, 39% modacrylic, 14% Aramid, 3% elastane, flame resistant, 12 oz

8900 Navy blue
XS-4XL

To say this CAT 2 Fire Resistant hoodie is the most comfortable thing you will wear on the job site is an understatement, to say the least. We've chosen the finest quality materials bonded with the strongest seams in the industry to give you ultimate comfort and ultimate protection. Stay warm, stay safe, stay working.

CERTIFICATION: ASTM F1506-2018, CSA Z462-2018, ATPV rating: 17 cal/cm² CAT 2, NFPA 70E-2018



1642

FR STRETCH PANT

1552 91% cotton, 7% polyamide, 2% elastane, ripstop, stretch, flame resistant 8.3 oz

2700 Stone, **8900** Navy blue, **9100** Light grey, **9900** Black
30:28-46:34

This all-new FR Stretch Pant is a game changer in FR world. Featuring a ripstop stretch fabric this pant offers superior function and comfort for climbers. Step up your workwear game in comfort in or out of the harness.

CERTIFICATION: ASTM F1506, CSA Z462-2021, ATPV Rating: 8,9cal/cm², CAT 2, NFPA 2112-2023, NFPA 70E-2021



1653

FR STRETCH UTILITY PANTS

1552 91% cotton, 7% polyamide, 2% elastane, ripstop, stretch, flame resistant 8.3 oz

2700 Stone, **8900** Navy blue, **9100** Light grey, **9900** Black
30:28-46:34

This all-new FR Stretch Utility Pant is a game changer in FR world. We combined, RIPSTOP and stretch fabrics to create a functional and super comfortable pant designed for climbing with a CAT 2/2112 certification, and we added in Kneepads and Utility pockets for extreme function. Step up your workwear game in comfort, in or out of the harness.

CERTIFICATION: ASTM F1506, CSA Z462-2021, ATPV Rating: 8,9cal/cm², CAT 2, NFPA 2112-2023, NFPA 70E-2021



NEW!

1652

FR STRETCH PANTS WITH KNEEPADS

1552 91% cotton, 7% polyamide, 2% elastane, ripstop, stretch, flame resistant 8.3 oz

2700 Stone, **8900** Navy blue, **9100** Light grey, **9900** Black
30:28-46:34

Our innovative FR Stretch pant with a twist. We took our 1642 and 1653 pants and found the perfect medium. Featuring a ripstop stretch fabric this pant offers superior function and comfort for climbers, and it now offers kneepad pockets without the added Utility pockets. Step up your workwear game in comfort in or out of the harness.

CERTIFICATION: ASTM F1506, CSA Z462-2021, ATPV Rating: 8,9cal/cm², CAT 2, NFPA 2112, NFPA 70E-2021





2012

FR BEANIE

1770 97% cotton, 3% elastane, rib, flame resistant, 7oz
8900 Navy blue
 One size

Call it a beanie, call it a toque... whatever you call it, it's the one you want when you need protection from the cold and the current. This ultra-soft material will keep you safe and comfortable in any situation.

CERTIFICATION: ASTM F1506-2018, CSA Z462-2018, NFPA 2112-2018, NFPA 70E-2018



2014

FR NECK WARMER

1775 100% cotton, interlock, flame resistant 6.5 oz
8900 Navy blue
 One size

The 2014 Neck Warmer is a great add-on to your everyday carry. This lightweight article will help keep you warm and protected when it's cold, but it's easily removable as it heats up. It's the perfect accessory for cold-weather work.

CERTIFICATION: ATPV Rating: 9,1cal/cm², CAT 2, CSA Z462-2021, NFPA 2112-2023, NFPA 70E-2021



2013

FR HEAVY BALACLAVA

1763 44% lyocell, 39% modacrylic, 14% Aramid, 3% elastane, flame resistant, 12 oz
8900 Navy blue
 One size

This 12oz, heavy-weight Balaclava offers added protection for when you need to be extra cautious. Wear it as a neck warmer, or a full face covering, this soft fabric is ultra comfortable without sacrificing any safety standards.

CERTIFICATION: ASTM F1506-2018, ATPV rating: 17 cal/ cm² CAT 2, CSA Z462-2018, NFPA 70E-2018, NFPA 2112-2018



2013

FR BALACLAVA

1770 97% cotton, 3% elastane, rib, flame resistant, 7oz
8900 Navy blue
 One size

This 7oz, light-weight Balaclava offers added protection for when you need to be extra cautious. Wear it as a neck warmer, or a full face covering, this soft fabric is ultra comfortable without sacrificing any safety standards.

CERTIFICATION: ASTM F1506-2018, ATPV rating: 13 cal/ cm² CAT 2, CSA Z462-2018, NFPA 70E-2018, NFPA 2112-2018



02

HI-VIS



ANSI/ISEA
107-2015



CSA Z96
2015



VISIBILITY IS KEY

You need to stand out from the crowd, but not just for safety reasons. In this modern world branding and employee retention are more important than ever. When was the last time you wore a Hi-Vis jacket that you actually liked wearing? When was the last time your jacket or vest lasted longer than a season? Our hi-vis collection outperforms on every level. Comfort, durability, and function is what we do.



ANSI/ISEA
107-2015

Garment Type	Performance Class	Background Material	Reflective Material	Minimum Width Reflective Marterial
Type R Roadway and Temporary Traffic Control zones	Class 2*	0,50 m ²	0,13 m ²	25mm** 35mm
	Class 3**	0,80 m ²	0,20 m ²	25mm** 50mm
*For the smallest size offered in Type R, Performance Class 2, a minimum of 0,35m ² of background material may be used to accomodate small-sized workers. All subsequested larger sizes must use 0,50 m ²				
**For the smallest size offered in Type R, Performance Class 3, a minimum of 0,65m ² of background material may be used to accomodate small-sized workers. All subsequested larger sizes must use 0,80 m ²				
Supplemental Items*** Pants, Overalls, Shorts, Rain pants and Gaiters	Class E	0,30 m ²	0,07 m ²	25mm** 50mm
***When a supplement Class E item is worn with Performance Class 2 or 3, the overall classification for the ensemble shall be Performance Class 3				



CSA Z96
2015

	Class 3 apparel	Class 2 apparel	Class 1 apparel
Description of minimal coverage	Class 2 apparel, plus bands encircling both arms and both legs. These bands shall be composed of combined performance stripes/bands or a combination of retroreflective and background material	Full coverage of upper torso (front, back, sides and over shoulders)	Basic harness or stripes/bands over the shoulders and encircling the waist
Background material	See above	See above	0,14 m ² (minimum)
Retroreflective or combined-performance material used in conjunction with back-ground material	0,20 m ²	0,13 m ²	0,10 m ²

BLUE IS THE NEW BLACK

Set a new standard with our new Blue and Yellow accent. Your favorite products now in a whole new way.



3468 VISIBILITY POLO



7160 WOMEN'S HI-VIS WORK PANTS



4789 HI-VIS AIR MESH JACKET



1609 HI-VIS X1600 WORK PANTS



WORK SAFE WITH **HI-VIS**

1699

FLEXIBLE WITH STRETCH PANELS

Our latest 1699 pant is setting new standards for high-visibility clothing. We took the best features from our best selling pants and designed an all new hi-vis pants that will keep you cool, help you function better and keep you safe.

The CORDURA® reinforced ripstop material is breathable, tear resistant and water and dirt repellent. We even added top-load kneepads.



1699

HI-VIS RIPSTOP PANT

1831 85% polyester, 15% cotton, ripstop, 7 oz
3399 Yellow Hi-viz/Black
 30:28-44:34

We're stretching the limits of our hi-vis line with the 1699 hi-vis ripstop pant. The ripstop fabric is lightweight and comfortable, with the unmatched durability of even the heaviest of fabrics letting you take every step on the job site with confidence. All this with our stretch material gusseted crotch for wear and comfort makes this the perfect hi-vis work pant.

CERTIFICATION: ANSI/ISEA 107-2015 Class E - Class 3 Type R when combined with performance class 2 or 3 uppers, CSA Z96-15, class 2 when combined with vest, class 3 when combined with 2 or 3 uppers



1633

HI-VIS WORK PANTS

1860 65% polyester, 35% cotton, 9 oz
3399 Yellow Hi-viz/Black
 30:28-50:32

Durable fabric blend and built-in CORDURA® kneepad pockets stand up to tough conditions. Two utility pockets with bellows, CORDURA-lined back pockets, dark colors in wear points, multiple cargo pockets on side of legs and reflective tape.

CERTIFICATION: ANSI/ISEA 107-2015 Class E - Class 3 Type R when combined with performance class 2 or 3 uppers, CSA Z96-15, class 2 when combined with vest, class 3 when combined with 2 or 3 uppers



1609

HI-VIS X1600 WORK PANTS

1860 65% polyester, 35% cotton, 9 oz
3399 Yellow Hi-viz/Black, **9933** Black/Yellow Hi-viz
 30:28-50:32
3389 Yellow Hi-viz/Navy blue
 30:28-52:32

The durable, functional X1600 is now available in a safety pant. The CORDURA® extends up onto the thigh for added protection. Drawstring along boot. CORDURA® utility pockets for strength and versatility. Level 2 3M reflective tape. Be Seen!

CERTIFICATION: ANSI/ISEA 107-2015 Class E - Class 3 Type R when combined with performance class 2 or 3 uppers, CSA Z96-15, class 2 when combined with vest, class 3 when combined with 2 or 3 uppers



1697

VISIBILITY RIPSTOP PANTS

1330 60% cotton, 40% polyester, ripstop 7 oz
9933 Black/Yellow Hi-viz
 30:30-44:34

We're stretching the limits of our visibility line with the 1697 visibility ripstop pant. The mainly black ripstop fabric is lightweight and comfortable, with the unmatched durability of even the heaviest of fabrics letting you take every step on the job site with confidence. All this with our stretch material gusseted crotch for wear and comfort make this the perfect visibility work pant.

CERTIFICATION: CSA Z96-15, class 2 when combined with vest, class 3 when combined with 2 or 3 uppers





AVAILABLE
IN TALL SIZES



1689

HI-VIS LINED SHELL PANTS

1977 100% polyester, oxford, laminated, wind- and waterproof, breathable, 6 oz

3399 Yellow Hi-viz/Black
M-XXXL, LT-XLT

The trusted hi-vis shell pants are now available with winter lining. Face even the coldest, most treacherous conditions in confidence. With CORDURA®-reinforced knees, adjustable and removable suspenders and enough pockets to keep all your tools secure and handy, these pants will weather any storm.

CERTIFICATION: ANSI/ISEA 107-2015 Class E - Class 3 Type R when combined with performance class 2 or 3 uppers, CSA Z96-15, class 2 when combined with vest, class 3 when combined with 2 or 3 uppers



AVAILABLE
IN TALL SIZES



1685

HI-VIS SHELL PANTS

1977 100% polyester, oxford, laminated, wind- and waterproof, breathable, 6 oz

3399 Yellow Hi-viz/Black, **5399** Orange Hi-viz/Black
S-5XL, LT-XXLT

Breathable wind- and waterproof high visibility shell pants designed to handle Mother Nature's worst. Functional takes on a new meaning with features including adjustable/removable suspenders, adjustable leg ends with zippers and velcro, and CORDURA®-reinforced fabric over the knees. These pants aren't for any regular job. These pants will keep you safe and dry from your toughest job.

CERTIFICATION: ANSI/ISEA 107-2015 Class E - Class 3 Type R when combined with performance class 2 or 3 uppers, CSA Z96-15, class 2 when combined with vest, class 3 when combined with 2 or 3 uppers



AVAILABLE
IN TALL SIZES



4927

HI-VIS WINTER JACKET

1977 100% polyester, oxford, laminated, wind- and waterproof, breathable, 6 oz

3399 Yellow Hi-viz/Black, **5399** Orange Hi-viz/Black
XS-5XL, LT-XXLT

Wind and waterproof with a heavy quilt lining to keep you warm and dry. Fleece lined collar. The winter jacket includes waterproof taped seams, storm cuffs, waterproof chest pockets, arm pocket and 3M reflective tape. ANSI 107 Class 3.

CERTIFICATION: ANSI/ISEA 107-2010 Class 3, ANSI/ISEA 107-2015 Type R, Class 3



AVAILABLE
IN TALL SIZES



4789

HI-VIS AIR MESH JACKET

1977 100% polyester, oxford, laminated, wind- and waterproof, breathable, 6 oz

3399 Yellow Hi-viz/Black
S-4XL

3389 Yellow Hi-viz/Navy blue
XS-4XL

This newly designed jacket is also equipped with cleverly placed reflective details for increased visibility. The air mesh lining provides covers an extra layer for warmth, and the membrane in the outer shell fabric prevents moisture and wind from entering - allowing you to stay dry all day.

CERTIFICATION: ANSI/ISEA 107-2015 Type R, Class 3



4937

HI-VIS SHELL JACKET

1977 100% polyester, oxford, laminated, wind- and waterproof, breathable, 6 oz

3399 Yellow Hi-viz/Black, **5399** Orange Hi-viz/Black
XS-5XL, LT-XXLT

Lightweight, wind, and waterproof, including taped seams to keep you dry for the long haul. Safety harness access point through the back. The shell jacket includes waterproof zippers, a detachable hood, inside pockets, 3M reflective tape. ANSI/ISEA 107-2010 Class 3.

CERTIFICATION: ANSI/ISEA 107-2015 Type R, Class 3



4788

HI-VIS SOFTSHELL JACKET

2513 92% polyester, 8% elastane, 3-layer softshell, waterproof, windproof, breathable, stretch, 8 oz

3399 Yellow Hi-viz/Black
S-4XL

Our new softshell jacket is a real head turner – and not just because it's hi-vis. This stylish, wind- and water-resistant jacket is big on safety and features adjustable Velcro sleeves, new front zipper pockets, an adjustable collar, and a detachable hood. We know you work like a pro. It's time to look the part.

CERTIFICATION: ANSI/ISEA 107-2015 Type R, Class 3



AVAILABLE
IN TALL SIZES

4787

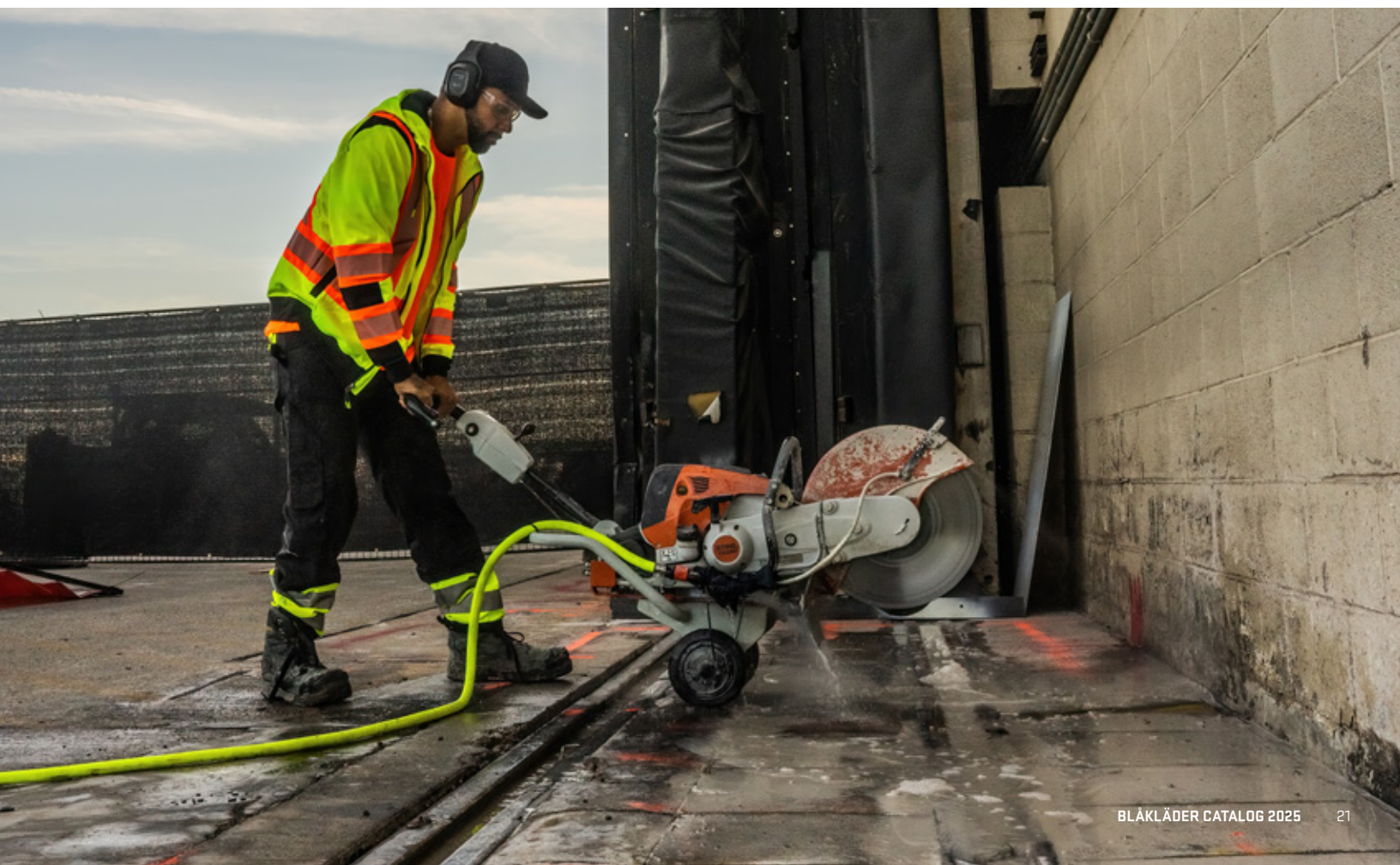
HI-VIS PREMIUM SHELL JACKET

1987 100% polyester, twill, laminated, wind- and waterproof, breathable, 5 oz

3399 Yellow Hi-viz/Black
S-5XL, LT-XXLT

Practical and movement friendly hi-vis shell jacket in a smooth, soft and quiet stretch material that gives you high comfort and increased mobility. The jacket is also equipped with cleverly placed reflective details for increased visibility. The fleece mesh lining provides excellent ventilation and the membrane in the outer shell fabric prevents moisture and wind from entering - allowing you to stay dry all day. ANSI/ISEA 107-2015 Type R class 3 NOT FR.

CERTIFICATION: ANSI/ISEA 107-2015 Type R, Class 3





3446

HI-VIS ZIP SWEATSHIRT

1974 100% polyester, jersey knitted, 7 oz
3399 Yellow Hi-viz/Black
 S-5XL

This ain't your mama's hoodie. Check out the hi-vis details on this hooded sweatshirt - hi-vis yellow and reflective details to make sure you're seen. Great for keeping you cozy when you need extra warmth out there.

CERTIFICATION: ANSI/ISEA 107-2015 Type R, Class 3



3442

HI-VIS HOODED SWEATSHIRT

2528 100% polyester, jersey, brushed inside, 8 oz
3300 Yellow, **5300** Orange
 S-4XL

This ain't your mama's hoodie. Stay visible and seen in our hi-vis Hoodie with a large front pocket! Great for keeping you cozy when you need extra warmth out there.

CERTIFICATION: ANSI/ISEA 107-2015 Type R, Class 3



3486

HI-VIS T-SHIRT

1011 100% polyester, UV-protection 40+, 4 oz
3300 Yellow
 S-XL

Hi-vis T-shirt with 50-mm-wide reflective tape. This is no ordinary T-shirt. Complete with anti-odor treatment, UV protection 40+ and ANSI/ISEA 107-2015 Type R, Class 2, this T-shirt keeps the sun off and the smell out.

CERTIFICATION: ANSI/ISEA 107-2015 Type R, Class 2



3488

HI VIS LONG SLEEVE T-SHIRT

1011 100% polyester, UV-protection 40+, 4 oz
5300 Orange
 S-4XL
3300 Yellow
 S-5XL

Get noticed in the 3488 Hi-Vis long sleeve t-shirt. We incorporated reflective tape to complement the Hi-Vis yellow you know and love so you'll never be missed. Comfy and lightweight so you can get to work without worry.

CERTIFICATION: ANSI/ISEA 107-2015 Type R, Class 3



3490

HI-VIS SHORT SLEEVED T-SHIRT

1011 100% polyester, UV-protection 40+, 4 oz
5300 Orange
 M-4XL
3300 Yellow
 M-5XL

This isn't your ordinary hi-vis T-shirt. It's a technical marvel that features an anti-odor treatment and UV protection for those long hot days in the sun. Plus, its bright yellow color and highly-reflective segmented stripes will keep you noticed from all angles, even on the busiest job sites.

CERTIFICATION: ANSI/ISEA 107-2015 Type R, Class 3





3468

VISIBILITY POLO

1051 100% polyester pique wicking, moisture transporting, UV protection, 5 oz

8933 Navy blue/Yellow Hi-viz, **9933** Black/Yellow Hi-viz XS-5XL

A soft and comfortable polo shirt with tailored reflective transfers for excellent stretch properties and breathability. This polo shirt provides UV protection and the fabric has an anti-odour effect, which reduces bacterial growth and prevents unpleasant odors. The polo shirt has a rib-knitted collar and a button neck.



4958

VISIBILITY ZIP SWEATSHIRT

2526 100% Polyester, pique fleece, brushed inside 8 oz

9933 Black/Yellow Hi-viz S-4XL

Looking to tone down the hi-vis look? Look no further than the 4958 Visibility Hooded Sweatshirt. We added some hi-vis yellow accents to the classic black hoodie - plus reflective tape for added flair.



4994

MICRO FLEECE JACKET

1010 100% polyester, microfleece, antipilling, 5 oz

9933 Black/Yellow Hi-viz S-4XL

Cozy up in your personal fleece cocoon and get some serious work done out in the bitter cold. This visibility fleece jacket features yellow striping on the front, back and arms and reflective panels on the shoulders to get you noticed on the job site.



3487

VISIBILITY T-SHIRT

1011 100% polyester, UV-protection 40+, 4 oz

3300 Yellow, **5300** Orange S-4XL

A simple visibility T-shirt kicked up a notch - Blaklader style. Featuring UV protection 40+ and anti-odor treatment, this T-shirt will keep you dry and seen all day.



3569

VISIBILITY CREW SWEATSHIRT

2528 100% polyester, jersey, brushed inside, 8 oz

3300 Yellow, **5300** Orange S-4XL

Increase your visibility and comfort with this classic crew neck sweatshirt. Now you can take all the comfort of your favorite weekend sweatshirt with you on the job site. We removed the hood on this design to create a great layering piece and accommodate certain safety ratings. It's a must have for the colder seasons.



3449

HOODED SWEATSHIRT

2528 100% polyester, jersey, brushed inside, 8 oz

3300 Yellow, **5300** Orange S-4XL

Workwear should be tough, which is why our sweatshirt has reinforced seams and thick 11-oz. cotton. Lucky for you, that means it's also 100% comfortable so you can move about freely and get your job done easier. It can be our secret. We left it blank so you'd have room for your brand!



4782

KEEP OUT THE COLD!

Built for some of the coldest and harshest conditions the workforce will ever face, this winter parka sets a new standard for warmth and durability. The 4782 was designed and built for the mining industry in the remote regions of Canada. Through years of R&D and user input, this parka is one of a kind and purpose-built for the industry featuring a removable hood, heavy quilt lining, tons of pockets and so much more.

4782

WINTER PARKA

1907 100% polyester, twill 2/2, laminated, wind- and waterproof, 6.6 oz

5300 Orange

XS-5XL

CERTIFICATION: ANSI/ISEA 107 Type R, Class 3, CSA Z96 Class 2





3139

HI-VIS SLEEVED VEST

1831 85% polyester, 15% cotton, ripstop, 7 oz
3399 Yellow Hi-viz/Black
 S-4XL

This class 3 vest is perfect for a lightweight visibility option. We've given it the full Blaklader package. Breathable materials bonded with strong seams and durable 3M reflective tape make this vest a great option for any job site. Now with Class 3 certification, we've simplified things even more. It's one vest to rule them all you might say.

CERTIFICATION: ANSI/ISEA 107-2015 Type R, Class 3



3132

HI-VIS SURVEYOR'S VEST

1831 85% polyester, 15% cotton, ripstop, 7 oz
3399 Yellow Hi-viz/Black
 S-4XL

With more pockets than you can count, you'll never lose a tool again with this hi-vis surveyor's vest. Plus, highly reflective stripes for visibility and black panels where your hands hang to keep your workwear looking clean. Tired of the same old cheap vests? Take your hi-vis game to a new level.

CERTIFICATION: ANSI/ISEA 107-2015 Type R, Class 2



3130

HI-VIS VEST

1054 100% polyester, knitted mesh, 4 oz
3399 Yellow Hi-viz/Black
 S-5XL

The long-awaited Blaklader hi-vis mesh vest is here at last. Built like the rest of our garments the quality is unrivaled in the vest arena. The contrast with black fabric allows you to work at your best while keeping the garment clean and visible as long as possible. Now you have a Blaklader option for the warmer days when our jackets are just too much. ANSI/ISEA 107-2015 Type R class 2 NOT FR.

CERTIFICATION: ANSI/ISEA 107-2015 Type R, Class 2



NEW COLOR!

3133

HI-VIS VEST

1054 100% polyester, knitted mesh, 4 oz
3399 Yellow Hi-viz/Black, **5399** Orange Hi-viz/Black
 M-4XL

Gear up with a premium Hi-Vis safety vest that works hard at getting you noticed, rain or shine. Black pockets hide marks from dirty hands to keep your bright pro-grade yellow vest brighter for longer.

CERTIFICATION: CSA Z96-15, class 2



3127

HI-VIS RIPSTOP UTILITY VEST

1831 85% polyester, 15% cotton, ripstop, 7 oz
3300 Yellow
 S-XXXL

It's not your average hi-vis vest. Made from a durable mesh and Ripstop blend, it includes swinging chest pockets with safety straps, four reinforced utility pockets at waist, safety harness access point through the back, a 3-inch extension with zipper and Level 2 3M reflective tape. ANSI/ISEA 107-2010 Class 2.

CERTIFICATION: ANSI/ISEA 107-2010 Class 2



3802

HI-VIS SHELL VEST

1804 85% polyester, 15% cotton, satin, 9 oz
3300 Yellow
 XS-4XL

This Hi-Vis safety vest is built for more than just visibility. It's custom-built for the harsh world of construction in the elements. Worn by some of the world's leading construction professionals, this vest is the perfect outer layer when you need something heavy-duty to keep you safe and visible.

CERTIFICATION: ANSI/ISEA 107-2010 Class 2





4928

HI-VIS WINTER JACKET



1977 100% polyester, oxford, laminated, wind- and waterproof, breathable, 6 oz

3399 Yellow Hi-viz/Black, **5300** Orange S-5XL

Wind and waterproof with a heavy quilt lining to keep you warm and dry. Fleece lined collar. The winter jacket includes waterproof taped seams, storm cuffs, waterproof chest pockets, arm pocket and 3M reflective tape.

CERTIFICATION: ANSI/ISEA 107-2015 Type R, Class 3, CSA Z96-09, Class 2, Meets CSA Z96-15 class 3 when combined with Blåkläder 1685, 1689 pants



4938

HI-VIS SHELL JACKET



1977 100% polyester, oxford, laminated, wind- and waterproof, breathable, 6 oz

3399 Yellow Hi-viz/Black, **5300** Orange S-5XL

Lightweight, wind and waterproof, including taped seams to keep you dry for the long haul. Safety harness access point through back. The shell jacket includes waterproof zippers, detachable hood, inside pockets, 3M reflective tape.

CERTIFICATION: ANSI/ISEA 107-2015 Type R, Class 3, CSA Z96-09, Class 2, Meets CSA Z96-15 class 3 when combined with Blåkläder 1685, 1689 pants



NEW!

3136

CSA SURVEYOR'S VEST



1831 85% polyester, 15% cotton, ripstop, 7 oz
5300 Orange S-5XL

Is there really such a thing as too many pockets for your work stuff? This pro-grade, hi-vis vest features blackout, drainable front pockets and extra nooks and crannies to stow your gear. Plus, its cool mesh shoulder material takes comfort to the next level.

CERTIFICATION: ANSI/ISEA 107-2015 Type R, Class 2, CSA Z96 Class 2



3138

5-POINT TEAR AWAY VEST



1054 100% polyester, knitted mesh, 4 oz
5300 Orange S-L-XL-3XL

Sometimes wearing safety gear means being prepared for a quick escape. This quick tear away vest has 5 break points for an easy escape in the case of a hangup or snag. We also made it an adjustable size to fit a wider range of wearers. The mesh back and front provides excellent ventilation for those hot summer days and the safety harness access allows for additional safety gear.

CERTIFICATION: ANSI/ISEA 107-2015 Type R, Class 2, CSA Z96-15, class 2



3495

CSA HI-VIS T-SHIRT



1011 100% polyester, UV-protection 40+, 4 oz
5300 Orange M-4XL

This isn't your ordinary hi-vis t-shirt. This CSA Class 2 approved T-shirt is a technical marvel that features an anti-odor treatment and UV protection for those long hot days in the sun. Plus, its bright yellow color and highly-reflective stripes will keep you noticed from all angles, even on the busiest job sites.

CERTIFICATION: CSA Z96-15, class 2



3496

CSA HI-VIS LONG SLEEVE T-SHIRT



1011 100% polyester, UV-protection 40+, 4 oz
5300 Orange S-4XL

Get noticed in this CSA Class 2 Hi-Vis long sleeve t-shirt. We incorporated reflective tape to complement the Hi-Vis yellow you know and love so you'll never be missed. Comfy and lightweight so you can get to work without worry.

CERTIFICATION: CSA Z96-15, class 2



4975

HI-VIS SOFTSHELL JACKET

2517 100% polyester, 3-layer softshell fabric, wind- and waterproof, breathable, 9 oz
3399 Yellow Hi-viz/Black
 S-4XL

Come rain, hail or high water, this well-constructed hi-vis jacket will help keep you noticed in heavy downpours and nightfall. Plus, its blackout front pockets - the part you're always touching - help keep this jacket's bright parts brighter for maximum effectiveness.

CERTIFICATION: ANSI/ISEA 107-2015 Type R, Class 3, CSA Z96-15, class 2, Meets CSA Z96-15 class 3 when combined with Blåkläder trouser class 2



3448

HI-VIS ZIP SWEATSHIRT

1974 100% polyester, jersey knitted, 7 oz
3399 Yellow Hi-viz/Black
 S-4XL

Here's a bright idea: get your crew dressed up with these hi-vis, zip-up hoodies. They'll keep them looking fresh with black panels strategically placed where they get dirty first - under the forearms, cuffs, and tops of the shoulders. Get noticed first with Blåkläder.

CERTIFICATION: ANSI/ISEA 107-2015 Type R, Class 3, CSA Z96-15, class 2, Meets CSA Z96-15 class 3 when combined with Blåkläder trouser class 2



03

RAIN



4317

HOODED RAIN JACKET WITH REFLECTIVE DETAILS

2003 100% polyester, polyurethane coated, wind and waterproof, 7 oz

9900 Black

S-4XL

Get the protection of 100 umbrellas with this much-easier-to-wear polyurethane-coated rain jacket. Its water and wind proof to keep you dry and focused in the face of nasty weather. Its black color is extra tough to get dirty, even on the dirtiest of job sites.





4318

HI-VIS RAIN COAT



2003 100% polyester, polyurethane coated, wind and waterproof, 7 oz

3399 Yellow Hi-viz/Black
S-4XL

This waterproof, hi-vis coat is like a bright umbrella for your body. Its polyester PU-coated material is completely wind- and waterproof to keep you warm, dry and highly visible in torrential downpours. Even the pockets and zippers are designed to keep dry things dry in the rain.

CERTIFICATION: ANSI/ISEA 107-2015 Type R, Class 3, CSA Z96-15, class 2, Meets CSA Z96-15 class 3 when combined with Blåkläder trouser class 2



4319

HI-VIS RAIN JACKET



2003 100% polyester, polyurethane coated, wind and waterproof, 7 oz

3399 Yellow Hi-viz/Black
S-4XL

If staying dry is on your punch list, this rain jacket will get the job done. It's wind- and waterproof polyester PU-coated material, and sealed zippers work to keep you warm and comfortable. And of course, hi-vis reflective stripes will help keep you seen while working in downpours.

CERTIFICATION: ANSI/ISEA 107-2015 Type R, Class 3, CSA Z96-15, class 2, Meets CSA Z96-15 class 3 when combined with Blåkläder trouser class 2



4312

HI-VIS RAIN JACKET



2003 100% polyester, polyurethane coated, wind and waterproof, 7 oz

3399 Yellow Hi-viz/Black
S-4XL

What rain? The 4312 Hi-Vis rain jacket is equipped with wind and waterproof PU Coating to keep you safe and dry. This jacket stands out with Hi-Vis yellow body and added reflective details.

CERTIFICATION: ANSI/ISEA 107-2015 Type R, Class 3



4316

HI-VIS RAIN COAT



2003 100% polyester, polyurethane coated, wind and waterproof, 7 oz

3399 Yellow Hi-viz/Black
S-4XL

Rain rain come back some other day. No storm stands a chance against our 4316 Hi-Vis Rain Coat. Our polyester PU Coated material is wind and waterproof to keep you safe and warm. This jacket is equipped with cleverly placed reflective details for increased visibility.

CERTIFICATION: ANSI/ISEA 107-2015 Type R, Class 3



1380

RAIN PANTS



2003 100% polyester, polyurethane coated, wind and waterproof, 7 oz

3300 Yellow
S-4XL

Breathable wind-and-waterproof rain pants designed to keep you dry through whatever weather. Adjustable straps to create the perfect fit, strategically placed reflective tape for added visibility.

CERTIFICATION: ANSI/ISEA 107-2015 Class E - Class 3 Type R when combined with performance class 2 or 3 uppers, CSA Z96-15, class 2 when combined with vest, class 3 when combined with 2 or 3 uppers



1387

RAIN PANTS WITH REFLECTIVE DETAILS

2003 100% polyester, polyurethane coated, wind and waterproof, 7 oz

9900 Black
S-4XL

Keep your legs high and dry with these waterproof rain pants. These pants have CORDURA®-reinforced knees and the reflective stripes make you visible from all angles. We've got your front and back side covered with these pants.

04

PANTS/SHORTS



1622

4-WAY STRETCH WORK PANTS



ZIP-OFF UTILITY POCKETS

CORDURA® REINFORCEMENT
AT POCKET OPENING

REINFORCED RULER POCKET

ADJUSTABLE LEG HEM WITH
DRAWSTRING AND REINFORCEMENT

4-WAY STRETCH MATERIAL

LEGPocket WITH PHONE
AND PEN POCKET

NEW KNEEPAD DESIGN

CORDURA® REINFORCEMENT



STRETCH IT!



**WATER
RESISTANT**

1615

SOFTSHELL PANT

2513 92% polyester, 8% elastane, 3-layer softshell, waterproof, windproof, breathable, stretch, 8 oz

9900 Black
30:28-44:34

The 1615 Softshell pant is an all-new water-resistant design focused on comfort and function. This advanced material is built to take a beating in the harshest environments. Extreme durability and comfort? It's a perfect combo for the working professional.



NEW COLORS!

1622

4-WAY STRETCH WORK PANTS

1644 93% polyamide, 7% elastane, Dobby, 4-way stretch, 295 g/m²

8699 Dark navy/Black, **9899** Darkgrey/black, **9900** Black, **9954** Black/Orange
30:28-44:34

Prepare yourself for the ultimate work pant. An all-new 4-way stretch fabric, a newly designed kneepad pocket, CORDURA reinforcements, and detachable utility pockets are only some of the features that make this pant one of the best we've ever made. Be one of the first to experience a revolution in workwear.



STRETCH IN
GUSSET AND
BACKSIDE

1655

SERVICE PANTS WITH STRETCH

1845 65% polyester, 35% cotton, plain, 5 oz
2799 Stone/Black, **4599** Dark olive green/black, **5999** Burned Red/Black, **8699** Dark navy/Black, **9699** Grey/Black, **9900** Black
30:28-44:34

Now you can squat, jump, kick and crawl with confidence. These service pants feature our tough stretch material throughout for unprecedented comfort and maneuverability. Its generously sized utility pockets are perfect for carrying tools and parts on the go.



1690

RIPSTOP PANTS

1330 60% cotton, 40% polyester, ripstop 7 oz
1098 White/Dark grey, **2700** Stone, **8600** Dark navy blue, **9900** Black
 30:28-50:32

A new, heavily tested fabric is launched within Blaklader. The ripstop fabric is lightweight and comfortable with an unmatched durability of even the heaviest fabrics. Equipped with features like kneepad pockets and carpenter pockets on the leg makes this pant the essential tool for your work day. The gusseted crotch panel made from stretch material increases the flexibility and durability of the garment.



1691

RIPSTOP PANTS WITH UTILITY POCKETS

1330 60% cotton, 40% polyester, ripstop 7 oz
1098 White/Dark grey, **2700** Stone, **8600** Dark navy blue, **9900** Black
 30:28-44:34

Our top-selling ripstop pant now with the utility pockets you've wanted. The ripstop fabric is lightweight and comfortable with an unmatched durability of even the heaviest fabrics. Equipped with features like kneepad pockets and carpenter pockets on the leg makes this pant the essential tool for your workday. The gusseted crotch panel made from stretch material increases the flexibility and durability of the garment.



1616

CRAFTSMAN PANTS

1344 98% cotton, 2% elastolefin, canvas, 285 g/m²
9900 Black
 30:28-44:34

The 1616 is a highly requested option across several industries. It's an all-cotton version of our 1691 pants with utility pockets. A lighter-weight, more breathable fabric that still offers all the functionality including kneepad pockets, cargo pockets, and more.



NEW!
1694

LIGHT CRAFTSMAN PANT

1845 65% polyester, 35% cotton, plain, 5 oz
2799 Stone/Black, **8600** Dark navy blue, **9900** Black
 30:28-44:34

Cut literally from the same cloth as our popular service pants, the 1694 is built for agile, high performance! Featuring a light-weight breathable fabric, stretch panels, kneepad pockets, right and left side cargo pockets and fitted for zip-on utility pockets, this light weight craftsman pant checks all the boxes and then some!



NEW!
1603

CRAFTSMAN PANTS WITH STRETCH

1832 63% polyester, 33% cotton, 4% elastolefin, twill 2/1, stretch, 260 g/m²
4298 Forest Night/Black, **8600** Dark navy blue, **9900** Black
 30:28-44:34

Comfortable, lightweight craftsman trousers in a thinner 2-way stretch material and with panels in 4-way stretch that really deliver the ultimate comfort where it's needed most. The trousers have bottom-fed knee protector pockets with CORDURA® stretch, practical pockets with reinforcement, ruler pocket, front pockets and loop for hammer holder on both the left and right sides.



NEW!
1604

CRAFTSMAN TROUSERS WITH STRETCH

1832 63% polyester, 33% cotton, 4% elastolefin, twill 2/1, stretch, 260 g/m²
4298 Forest Night/Black, **8600** Dark navy blue, **9900** Black
 30:28-44:34

Comfortable, lightweight craftsman trousers in a thinner 2-way stretch material and with panels in 4-way stretch that really deliver the ultimate comfort where it's needed most. The trousers have fixed nail pockets, bottom-fed knee protector pockets with CORDURA®-stretch, practical pockets with reinforcement, ruler pocket, front pockets and loop for hammer holder on both the left and right sides.



1659

URBAN CORDURA® DENIM

1140 88% cotton, 12% polyamide, denim, coated, CORDURA® denim, 11 oz

8900 Navy blue, **9900** Black
30:28-44:34

Discover our hard wearing CORDURA® denim pants with internal knee pad pockets. They combine an everyday workwear functionality with an exciting design and high craftsman quality. With a loose fit and great comfort it feels like a nice pair of jeans but with four time's stronger material than normal denim.



1610

SERVICE/MECHANIC PANT

1800 65% polyester, 35% cotton, twill, 7 oz

8900 Navy blue
30:28-50:32

Our tried and trusted work pants designed with the mechanic and service industry in mind. Made from polyester and cotton blend, these pants keep you comfy so you can get on with the work day. Knee pad pockets made from the main pant fabric blend seamlessly for a clean look.



1600

X1600 WORK PANTS

1370 100% cotton, 11 oz

9499 Grey/Black, **9900** Black
30:28-44:34
9900 Black
30:30-42:32

These pants aren't made for just any craftsman. A cotton canvas base covered by extended CORDURA® leg shields makes them the pants of hammer-wielding warriors. Adjustable kneepads and reinforced utility pockets, side pockets, ankle cuffs and belt loops keep you agile, comfortable and protected on the most aggressive jobsites. If you're looking for a pair of pants to wear out on Saturday night, keep on looking. But if you think you can handle the X1600, go ahead and prove us wrong.



1630

BANTAM WORK PANTS - WITH UTILITY POCKETS

1310 100% cotton, 8 oz

2700 Stone, **2800** Antique khaki, **8300** Steel blue, **9900** Black
30:28-50:32

These Blaklader work pants are as tough as armor and light as a feather. The 8 oz. cotton canvas material makes them as comfortable as your oldest jeans. The CORDURA® reinforcements and triple stitching make them as tough as a brand new bulletproof vest. If durability and functionality isn't what you're looking for, you came to the wrong place. If you're a leader, start wearing pants like a leader.



1630

BRAWNY WORK PANTS - WITH UTILITY POCKETS

1320 100% cotton, 12 oz

2800 Antique khaki, **8300** Steel blue
30:28-50:32
9900 Black
30:30-50:32

If the jobsite keeps shredding your jeans, it's time to upgrade to Brawny pants. Made from heavy 12 oz. cotton, they're light enough to wear in the warm weather but durable enough to last. Brawny pants are the work place trifecta: durable, comfortable and lightweight.



1680

HEAVY WORKER PANTS

1380 78% polyester, 22% cotton, 10 oz

8999 Navy blue/Black, **9900** Black
30:28-44:34
2399 Khaki/Black
32:28-44:34

You might say Heavy Worker pants have a timeless look - timeless because you won't be buying new pants for a long time. Proven to last longer than four pairs of jeans, these sturdy polyester-cotton tanks include loads of CORDURA® reinforcements in strategic wear points on the knees, rear pockets, seat and ankle cuffs. If Blaklader's Heavy Workers don't stand up to your jobsite, nothing will. If you are looking for something tougher, you better have some sheet metal and a welder.



1637

RIPSTOP SHORTS - WITH UTILITY POCKETS

1330 60% cotton, 40% polyester, ripstop 7 oz
1098 White/Dark grey, **2700** Stone, **8600** Dark navy blue, **9900** Black
 30-44

This is the closest you can get to not wearing shorts while wearing some seriously heavy-duty shorts. They feature stretchy, breathable fabric in the crotch to keep things cool and give you the freedom to move. Plus, you've got built-in utility pockets for all your gear. The ripstops here.



1638

RIPSTOP SHORTS

1330 60% cotton, 40% polyester, ripstop 7 oz
1098 White/Dark grey, **2700** Stone, **8600** Dark navy blue, **9900** Black
 30-44

With an extra breathable, stretch material in the crotch, it's easy to forget that you're wearing one of our toughest pairs of shorts. You'll enjoy every cool breeze and have the freedom to take on high steps and jumps with rip-roaring confidence.



1692

RIPSTOP LONG SHORT WITH UTILITY POCKETS

1330 60% cotton, 40% polyester, ripstop 7 oz
2700 Stone, **8600** Dark navy blue, **9900** Black
 30-44

The Ripstop Long Short....is more than an oxymoron. It's everything you know and love in our classic Ripstop shorts, with a little extra length. Suns out, thighs covered.



1656

SERVICE SHORTS WITH STRETCH

1845 65% polyester, 35% cotton, plain, 5 oz
2799 Stone/Black, **4599** Dark olive green /black, **5999** Burned Red/Black, **8699** Dark navy/Black, **9699** Grey/Black, **9900** Black
 30-44

The 1656 Service Shorts are the modern, lightweight and stylish take on the classic, utilitarian "cargo shorts". The light cotton canvas provides durability where it's necessary, while the black stretch fabric allows airflow and full freedom of movement. Now you can look good, feel good and perform at your best on and off the job site.



CORDURA®-
REINFORCED
THIGHS

1602

WORK SHORTS X1600

1310 100% cotton, 8 oz
9900 Black
 30-44

Our popular X1600 series is also available as shorts. The comfortable fit and lots of practical pocket solutions make these work shorts a great choice in warm weather. The shorts have two free nail pockets in CORDURA® with tool loops that can be worn inside the trousers. Leg pocket with telephone pocket in water-resistant material.



1627

GLASGOW KILT

1370 100% cotton, 11 oz
9900 Black
 30-44

It takes a real man to wear a kilt - especially this one. The Glasgow has become the badge of craftsmen who take the road less traveled. It has the same functional pockets as Blaklader pants, but it includes a ventilation system that pants just can't offer. Sure, you'll be the only guy on the jobsite in a kilt. But you like it that way.

05

PAINTER





3555

SHORT SLEEVE BRANDED T-SHIRT

1042 100% cotton, single jersey, 4 oz

1000 White

S-4XL

Show everyone you mean business with this 100% cotton short-sleeve T-shirt featuring our no-nonsense logo on the chest.



3557

LONG SLEEVE BRANDED T-SHIRT

1042 100% cotton, single jersey, 4 oz

1000 White

S-4XL

Show everyone you mean business with this 100% cotton long-sleeve T-shirt featuring our no-nonsense logo on the chest.



3554

SHORT SLEEVE T-SHIRT

1042 100% cotton, single jersey, 4 oz

1000 White

S-4XL

Get back to the basics with this tough, 100% cotton short-sleeve T-shirt that will keep you comfortable while you're hard at work. The comfort of Blaklader with your own company logo. What's better than that?



3559

LONG SLEEVE T-SHIRT

1042 100% cotton, single jersey, 4 oz

1000 White

S-4XL

Get back to the basics with this tough, 100% cotton long-sleeve T-shirt that will keep you comfortable while you're hard at work. It's time to roll up your sleeves – just because you can, but only if you want to. Best part, throw your own logo on it!



4940

KNITTED JACKET

2117 100% polyester, knitted, 11 oz

9099 Grey melange/Black

S-XXXL

Knitted jacket with smart designer hood for comfort. The jacket has contrasting zips and is reinforced with soft shell material on the elbows, shoulders and back for improved tear resistance. This is a great jacket for leisure and work.



1690

RIPSTOP PANTS

1330 60% cotton, 40% polyester, ripstop 7 oz
1098 White/Dark grey
 30:28-50:32

A new, heavily tested fabric is launched within Blaklader. The ripstop fabric is lightweight and comfortable with an unmatched durability of even the heaviest fabrics. Equipped with features like kneepad pockets and carpenter pockets on the leg makes this pant the essential tool for your work day. The gusseted crotch panel made from stretch material increases the flexibility and durability of the garment.



1691

RIPSTOP PANTS WITH UTILITY POCKETS

1330 60% cotton, 40% polyester, ripstop 7 oz
1098 White/Dark grey
 30:28-44:34

Our top-selling ripstop pant now with the utility pockets you've wanted. The ripstop fabric is lightweight and comfortable with an unmatched durability of even the heaviest fabrics. Equipped with features like kneepad pockets and carpenter pockets on the leg makes this pant the essential tool for your workday. The gusseted crotch panel made from stretch material increases the flexibility and durability of the garment.



1631

PAINTER PANTS

1210 100% cotton, 9 oz
1000 White
 30:28-44:34

Don't worry painters. We didn't forget about you. Painting is just as demanding as any other trade, so it requires the same functional clothing to get the job done smarter and faster. So, whether you're wearing another pair of white workpants or paint-splattered jeans, don't you think it's time you got some-thing truly built for your trade?



1638

RIPSTOP SHORTS

1330 60% cotton, 40% polyester, ripstop 7 oz
1098 White/Dark grey
 30-44

With an extra breathable, stretch material in the crotch, it's easy to forget that you're wearing one of our toughest pairs of shorts. You'll enjoy every cool breeze and have the freedom to take on high steps and jumps with rip-roaring confidence.



1637

RIPSTOP SHORTS - WITH UTILITY POCKETS

1330 60% cotton, 40% polyester, ripstop 7 oz
1098 White/Dark grey
 30-44

This is the closest you can get to not wearing shorts while wearing some seriously heavy-duty shorts. They feature stretchy, breathable fabric in the crotch to keep things cool and give you the freedom to move. Plus, you've got built-in utility pockets for all your gear. The ripstops here.



1634

PAINTERS WORK SHORTS

1210 100% cotton, 9 oz
1000 White
 30-44

Smooth comfortable 11oz. cotton delivers high performance durability for all you warm weather painters.

1691

RIPSTOP PANTS WITH UTILITY POCKETS

**RIP
STOP**

HAMMER LOOP

CORDURA® REINFORCED
UTILITY POCKETS

GUSSETED CROTCH WITH
STRETCH PANELS

ZIP POCKET

CORDURA® REINFORCED
KNEEPAD POCKET

DURABLE AND LIGHTWEIGHT
RIPSTOP MATERIAL

ADJUSTABLE HEM WITH
DRAWSTRING AND CORDURA®
REINFORCEMENT



06

JACKETS/VESTS



4742

HYBRID JACKET



REMOVABLE HOOD

PUFFY INSULATION

ZIP POCKET

SOFTSHELL SLEEVES

WARM AND
BREATHABLE

COLORED HIGHLIGHTS
FOR BRANDING



4742

SUPERIOR COMFORT IN EXTREME CONDITIONS

This line of outerwear is designed to protect against all elements and provide comfort, warmth and durability on the jobsite. No matter what the task, we have the jacket for you.

4742

HYBRID JACKET

2513 92% polyester, 8% elastane, 3-layer softshell, waterproof, windproof, breathable, stretch, 8 oz

9900 Black, **9954** Black/Orange
S-4XL

This multi-functional jacket is designed to be your go-to piece for warmth, comfort and style. A warm puffy core trimmed with softshell sleeves for added water resistance makes this an instant fan favorite for the hard core construction professional or the weekend warrior.



SOFTSHELL
**WIND &
WATER
RESISTANT**

4939

PRO SOFTSHELL JACKET

2517 100% polyester, 3-layer softshell fabric, wind- and waterproof, breathable, 9 oz

8642 Dark navy/Green, **8656** Dark navy/Red, **8942** Navy/Green, **9756** Dark grey/red, **9992** Black/silver
S-5XL

With the 4939 jacket, there's no such thing as adverse weather conditions. With two insulating layers and an outer windproof and waterproof stretch layer, there's no job too wet or too cold. While other guys are sitting around drinking hot cocoa, you'll be out swinging hammers and taking names.



SOFTSHELL
**WIND &
WATER
RESISTANT**

4957

SOFTSHELL JACKET

2517 100% polyester, 3-layer softshell fabric, wind- and waterproof, breathable, 9 oz

9900 Black
S-XXXL

With the 4957 jacket, wet working conditions become a worry of the past. Even without a hood, this jacket gets the job done with wind- and waterproof materials and no taped seams. The fleece-lined collar and extended back are just a few of the stand-out features that take this jacket to the Blaklader level.



4816

TOUGHGUY PILE LINED JACKET

1370 100% cotton, 11 oz
9900 Black
 S-XXXL

The Tough Guy Pile-Lined jacket is built with a thick cotton canvas exterior for rugged durability and insulating pile lining for extreme warmth and comfort. Like all Blaklader jackets, it has an extended back to keep you covered on those drafty days. So if you have the work ethic of a mailman, get yourself a jacket that means business.



4855

TWO FISTED FLEECE JACKET

2520 3-layer Polyester/PU, Windstopper Type, 14 oz
9900 Black
 L-XXXL
9499 Grey/Black
 S-XXXL

Think your work is too tough for fleece? Then you haven't tried the Two Fisted. It has strategic CORDURA® reinforcements in high-wear areas on the shoulders, arms and sides. So you can quit worrying about ripping your clothes and start thinking about the task at hand. With a wind and water resistant membrane between two layers of fleece, winter doesn't stand a chance. Lead the worksite war on winter with a jacket made to beat the elements.



3845

TWO FISTED FLEECE VEST

2524 100% polyester, 3-layer fleece, laminated, waterproof, windproof, breathable, 13oz
9900 Black
 S-4XL

Any vest is great for maximum mobility, but the Two Fisted Fleece vest adds functionality with three deep pockets to keep your tools close at hand. Like all Blaklader fleece, it has a wind and water resistant membrane and an extended back. Add reflective piping for low-lit worksites and that's one functional vest. Wearing any other vest is like trying to hammer a nail with a screwdriver.



4781

WINTER JACKET - LINED

1987 100% polyester, twill, laminated, wind- and waterproof, breathable, 5 oz
9900 Black
 S-4XL

Tough winter gear doesn't have to be tough to wear. This jacket lets you move freely and quietly with its extra-comfortable stretch material. A water-resistant membrane keeps the wet out while a breathable fleece mesh lining keeps the comfort in. Plus, black panels help hide dirt in high-contact areas so you can look sharp, even if you're knee-deep in snow.

INSULATED



4797

SHELL JACKET

1987 100% polyester, twill, laminated, wind- and waterproof, breathable, 5 oz
9900 Black
 S-4XL

Practical and movement friendly shell jacket in a smooth, soft and quiet stretch material that gives you high comfort and increased mobility. The jacket is also equipped with cleverly placed reflective details for increased visibility. The fleecemesh lining provides excellent ventilation and the membrane in the surface fabric prevents moisture from entering - allowing you to keep dry all day.



NEW!

4702

RIPSTOP PILE LINED SHIRT

1330 60% cotton, 40% polyester, ripstop 7 oz
2700 Stone, **8600** Dark navy blue, **9900** Black
 XS-5XL

This instant classic is the perfect combination of shirt and jacket. Made of a durable Ripstop outer layer and warm, comfortable pile lining, this shirt is perfect for cool mornings on the job or crisp evenings by a fire.

4728

SHOW YOUR BRAND IN TECHNICAL EXCELLENCE

Don't settle with the garments you put your name on. Your brand deserves high quality and your potential customers will see the difference.

NEW!

4728

TECH JACKET - WITH HOOD

2526 100% Polyester, pique fleece, brushed inside 8 oz

9900 Black
XS-4XL

2533 100% polyester fleece one side brush, 235 g/m2

4199 Autumn green/Black, **8299** Numb Blue/Black
XS-4XL

A stylish hooded jacket that is great for wearing both on and off the job. This light polyester jacket features a full-length zip and a slightly longer neck. Drawstring at the hem. Black, discreet reflective trim on the front and hood, plus a chest pocket with space for logo decoration.



4965

KNITTED JACKET

2117 100% polyester, knitted, 11 oz

9710 Antracit grey/white
M-XXL

9056 Grey melange/Red
S-XXXL

Comfortable knitted jacket with zippers in contrasting colour. The jacket has elastic edging at sleeve ends and hem, extended back and fleece lined collar. The front pockets have zippers.



NEW!

4737

TECH JACKET

2526 100% Polyester, pique fleece, brushed inside 8 oz

9900 Black
XS-4XL

2533 100% polyester fleece one side brush, 235 g/m2

4199 Autumn green/Black, **8299** Numb Blue/Black
XS-4XL

A smart, light jacket that's great for both work and casual wear. This jacket/sweatshirt has discreet reflective details, a drawstring at the hem, and offers outstanding opportunities for corporate profiling.



4740

KNITTED FLEECE JACKET

2536 97% polyester, 3% elastane, Jacquard knit, one side brushed, stretch, 8, 5 oz
4199 Autumn green/Black, **5999** Burned Red/Black, **8299** Numb Blue/Black,
9799 Dark grey/Black
 S-4XL

This hooded knit jacket is built with a stylish design and unbeatable comfortable fleece quality. Boasting a unique material that can best be described as a three-dimensional fleece. The brushed material gives the jacket its appearance as well as its comfort and warmth when needed. The softshell reinforcement provides added durability and branding space, while leaving room for ventilation. The 4740 is the ultimate jacket for work or relaxation.



4940

KNITTED JACKET

2117 100% polyester, knitted, 11 oz
3399 Yellow Hi-viz/Black, **8642** Dark navy/Green, **9099** Grey melange/Black,
9799 Dark grey/Black
 S-XXXL

Knitted jacket with smart designer hood for comfort. The jacket has contrasting zips and is reinforced with soft shell material on the elbows, shoulders and back for improved tear resistance. This is a great jacket for leisure and work.



3115

THE ULTIMATE JOBSITE VEST

This vest's main fabric is Blaklader's new heavily tested ripstop material. It's lightweight, comfortable, and extremely durable. Slip on this vest to stay cool and comfortable with front and back mesh fabric. Includes phone pocket, pen pocket, front and back nail pockets and a side hammer loop to hold everything you need to make the job a breeze.

3115

RIPSTOP KANGAROO MESH VEST

1330 60% cotton, 40% polyester, ripstop 7 oz
2700 Stone, **8600** Dark navy blue, **9900** Black
 S-XXXL

This vest's main fabric is Blaklader's new heavily tested ripstop material. It's lightweight, comfortable, and extremely durable. Slip on this vest to stay cool and comfortable with front and back mesh fabric. Includes phone pocket, pen pocket, front and back nail pockets and a side hammer loop to hold everything you need to make the job a breeze.

07

SHIRTS/ SWEATSHIRTS





3441

3D HOODIE

1158 100% cotton, french terry, 320 g/m²
2509 Warm beige, **4109** Autumn Green, **5909** Burned Red, **8209** Blue limited, **9900** Black
 S-4XL

Everyone loves a good Hoodie. Well, this one raises the bar. This bold new look is crafted in 100% cotton material with a classic fit. It also boasts an all-new 3D "Blåkläder" logo to help you stand out in the crowd. This hoodie is seriously cozy, but don't let it fool you, just like any Blåkläder item, it's ready for a hard day's work.



3443

3D T-SHIRT

1042 100% cotton, single jersey, 4 oz
2509 Warm beige, **4109** Autumn Green, **5909** Burned Red, **8209** Blue limited, **9900** Black
 S-4XL

Take your shirt game to the next level with the 3D "Blåkläder" T-shirt! This bold new look is crafted in 100% cotton material for premium comfort. The 3D T is already a Blåkläder classic and it's perfect for wearing both on and off the job site.



3447

HOODED SWEATSHIRT WITH PRINT

1048 80% cotton, 20% polyester, terry knit inside
 brushed 11 oz
8600 Dark navy blue, **9400** Grey, **9900** Black
 S-4XL

If it didn't have reinforced seams and thick 11-oz. cotton, we wouldn't put our name on it. We stand behind our seriously tough sweatshirts. By the way, they're also seriously comfortable to work in.



3557

LONG SLEEVE BRANDED T-SHIRT

1042 100% cotton, single jersey, 4 oz
1000 White, **8600** Dark navy blue, **9400** Grey, **9900** Black
 S-4XL

Show everyone you mean business with this 100% cotton long-sleeve T-shirt featuring our no-nonsense logo on the chest.



3555

SHORT SLEEVE BRANDED T-SHIRT

1042 100% cotton, single jersey, 4 oz
1000 White, **8600** Dark navy blue, **9400** Grey, **9900** Black, **9935** Black/Yellow
 S-4XL

Show everyone you mean business with this 100% cotton short-sleeve T-shirt featuring our no-nonsense logo on the chest.

BUILT FOR SUMMER



This new range of UV-protected shirts will make everyone look forward to a hot summer. An all-new lightweight stretch material offers superb ventilation, and moisture management, while still protecting from harmful UV-exposure. The range comes with short- and long-sleeve T-shirts along with a light summer hoodie and a professional looking polo, and they're available in multiple colors. Whether you are working indoor or outdoor, this is what you will want to wear when temperatures start heating up.

NEW!

3516

PERFORMANCE HOODIE

1126 91% polyester, 9% spandex, jacquard knit, wicking, UV-protection, 135g/m²

4209 Forest Night, **8600** Dark navy blue, **9600** Grey, **9900** Black
XS-4XL

A comfortable, lightweight, and functional hoodie made from a ventilated and lightly knitted fabric with texture. The material provides a pleasant feel while effectively protecting you from the sun's strong UV rays.



NEW!

3507

PERFORMANCE T-SHIRT

1126 91% polyester, 9% spandex, jacquard knit, wicking, UV-protection, 135g/m²

4209 Forest Night, **8600** Dark navy blue, **9600** Grey, **9900** Black
XS-4XL

A comfortable, lightweight, and functional T-shirt made from a ventilated and lightly knitted fabric with texture. The material provides a pleasant feel while effectively protecting you from the sun's strong UV rays.

CERTIFICATION: EN 13758-2 UPF 40+



NEW!

3509

PERFORMANCE POLO

1126 91% polyester, 9% spandex, jacquard knit, wicking, UV-protection, 135g/m²

4209 Forest Night, **8600** Dark navy blue, **9600** Grey, **9900** Black
XS-4XL

A comfortable, lightweight, and functional polo shirt made from a ventilated and lightly knitted fabric with texture. The material provides a pleasant feel while effectively protecting you from the sun's strong UV rays.

CERTIFICATION: EN 13758-2 UPF 40+



3451

SHORT SLEEVE POLO SHIRT

1051 100% polyester pique wicking, moisture transporting, UV protection, 5 oz

8900 Navy blue, **9400** Grey, **9900** Black
S-4XL

Whether you're 30 feet up on bucks or at ground level talking to your customers, this polo shirt says you're the go-to guy to get things done. This polo features the Blaklader logo low and on the side, and is available in three colors. Can't decide which color? Collect them all.



3554

SHORT SLEEVE T-SHIRT

1042 100% cotton, single jersey, 4 oz

1000 White, **8600** Dark navy blue, **9400** Grey, **9900** Black
S-4XL

Get back to the basics with this tough, 100% cotton short-sleeved T-shirt that will keep you comfortable while you're hard at work. The comfort of Blaklader with your own company logo. What's better than that?



3445

BRANDED HOODED ZIP-UP SWEATSHIRT

1048 80% cotton, 20% polyester, terry knit inside brushed 11 oz

8600 Dark navy blue, **9400** Grey, **9900** Black
S-4XL

The classic Zip-up hoodie is a true standard in workwear. Boasting a clean logo on the right sleeve, this hoodie is warm and soft on the inside, but don't let it fool you. It's here to get the job done day after day and keep on kicking.



3569

CREW NECK SWEATSHIRT

1048 80% cotton, 20% polyester, terry knit inside brushed 11 oz

8600 Dark navy blue, **9400** Grey, **9900** Black
S-4XL

This long-awaited classic sweatshirt is a must-have for literally everyone. Whether you use it as a layering piece under your jacket, or just by itself on the weekends, this crew neck sweatshirt is one of the most comfortable things you will wear.



3449

HOODED SWEATSHIRT

1048 80% cotton, 20% polyester, terry knit inside brushed 11 oz

8600 Dark navy blue, **9400** Grey, **9900** Black
S-4XL

Workwear should be tough, which is why our sweatshirt has reinforced seams and thick 11-oz. cotton. Lucky for you, that means it's also 100% comfortable so you can move about freely and get your job done easier. It can be our secret. We left it blank so you'd have room for your brand!



NEW COLOR!

3456

HOODED ZIP-UP SWEATSHIRT

1048 80% cotton, 20% polyester, terry knit inside brushed 11 oz

8600 Dark navy blue, **9400** Grey, **9900** Black
S-4XL

This unbranded classic Zip-up hoodie is a true standard in workwear and ready for your logo. This hoodie is warm and soft on the inside, but don't let it fool you. It's here to get the job done day after day and keep on kicking.

09

WOMEN'S





4968

WOMEN'S HI-VIS SHELL JACKET

1987 100% polyester, twill, laminated, wind- and waterproof, breathable, 5 oz

3399 Yellow Hi-viz/Black
S-XXXL

This hi-vis shell jacket is a premium solution for wind and water proof protection. Featuring taped seams and a stretchy fabric, this jacket will be your most durable and your most comfortable option when the weather turns against you.

CERTIFICATION: ANSI/ISEA 107-2015 Type R, Class 2



4777

WOMEN'S HI-VIS SOFTSHELL

2513 92% polyester, 8% elastane, 3-layer softshell, waterproof, windproof, breathable, stretch, 8 oz

3399 Yellow Hi-viz/Black
S-XXXL

This hi-vis softshell was designed and built for women. A lightweight, breathable solution that will not hinder movement, this jacket is an ideal addition to your wardrobe. This jacket features water-resistant material, functional pocket design and a tailored cut for better fit and comfort on the job site.

CERTIFICATION: ANSI/ISEA 107-2015 Type R, Class 2



7160

WOMEN'S HI-VIS WORK PANTS

1860 65% polyester, 35% cotton, 9 oz

8933 Navy blue/Yellow Hi-viz
2S-20S, 2R-14R, 6L-20L

A truly functional Hi-Vis work pant built for women who work. This ultra-durable pant is designed to handle the toughest jobs and keep ongoing. Featuring bellowed pockets, CORDURA reinforced Kneepad pockets, and triple stitching. It's unlike any other Hi-Vis pant on the market today.

CERTIFICATION: ANSI/ISEA 107-2020 Class E, NOT FR - Class 2 Type R NOT FR when combined with performance class 2- or 3-uppers, CSA Z96-15, class 2 when combined with vest, class 3 when combined with 2 or 3 uppers



3497

WOMEN'S HI-VIS LONG SLEEVE T-SHIRT

1013 100% polyester, birds eye knit, wicking, UV-protection, 5oz

3300 Yellow, **5300** Orange
S-XXXL

Stay cool in this hi-vis long sleeve T-shirt. Say goodbye to those oversized unisex T-shirts. We built a T-shirt for women with a tailored cut for a more comfortable, purposeful fit. For additional functionality and safety, we incorporated segmented reflective tape for a class 3 certification.

CERTIFICATION: ANSI/ISEA 107-2015 Type R, Class 3



3499

WOMEN'S HI-VIS T-SHIRT

1013 100% polyester, birds eye knit, wicking, UV-protection, 5oz

5300 Orange
S-XXXL

3300 Yellow
XS-XXXL

Stay cool in this hi-vis T-shirt. Say goodbye to those oversized unisex T-shirts. We built a T-shirt for women and we incorporated reflective tape for a class 3 certification along with a tailored cut for a more comfortable, purposeful fit.

CERTIFICATION: ANSI/ISEA 107-2015 Type R, Class 2



3137

US WOMEN'S HI-VIS VEST

1831 85% polyester, 15% cotton, ripstop, 7 oz

3399 Yellow Hi-viz/Black
S-XXXL

A high-quality safety vest designed and built for women. We took our most popular surveyor's vest and tailored it for hard-working women. With more pockets than you can count, you'll never lose a tool again with this hi-vis surveyor's vest. Plus, highly reflective stripes for visibility and black panels where your hands hang to keep your workwear looking clean.

CERTIFICATION: ANSI/ISEA 107-2015 Type R, Class 2





4741

WOMEN'S KNITTED FLEECE JACKET

2536 97% polyester, 3% elastane, Jacquard knit, one side brushed, stretch, 8, 5 oz

5999 Burned Red/Black, **9799** Dark grey/Black
XS-XXL

This hooded knit jacket is built with a stylish design and unbeatable comfortable fleece quality. This two-way zipper front jacket has a new, unique material that can best be described as a three-dimensional fleece. The brushed material gives the jacket its appearance with stretchy and supple comfort and warmth when needed. The softshell reinforcement provides added durability and branding space, while leaving room for ventilation. The 4741 is the ultimate jacket for work or relaxation.

*NOTE THESE ARE ALL EU SIZING RELABELED FOR US SIZING (I.E. STICKERS SHOW US MEDIUM AND TAG INSIDE THE GARMENT SHOWS EU LARGE)



4772

WOMEN'S AIR MESH JACKET

1977 100% polyester, oxford, laminated, wind- and waterproof, breathable, 6 oz

9900 Black
S-XXXL

This Air Mesh-lined jacket is built to keep up with the hardest working women out there. This tailored jacket will keep you comfortable in cooler temperatures without adding bulk. The subtly bold design boasts plenty of pockets and functionality along with flashes of hi-vis accents. The durable waterproof material is bonded by the toughest seams in the industry to give you confidence on and off the job site.



4976

WOMEN'S KNITTED JACKET

2117 100% polyester, knitted, 11 oz

9099 Grey melange/Black, **9799** Dark grey/Black
S-XXXL

The coveted and revered women's knitted jacket is a must-have for any hard working woman. This jacket is made from a comfortable, soft material reinforced with soft-shell along the higher wear areas. It's perfect for on the job, or for a laid back weekend.



3406

WOMEN'S SHORT SLEEVE T-SHIRT

1042 100% cotton, single jersey, 4 oz

1000 White, **8600** Dark navy blue, **9900** Black
XS-XXXL

Get back to the basics with this tough, 100% cotton short-sleeve T-shirt that will keep you comfortable while you're hard at work. The comfort of Blåkläder with your own company logo, and now in a Women's design. What's better than that?



3444

WOMEN'S 3D T-SHIRT

1042 100% cotton, single jersey, 4 oz

4109 Autumn Green, **5909** Burned Red, **9900** Black
XS-XXL

Take your shirt game to the next level with the 3D "Blåkläder" T-shirt! This bold new look is crafted in 100% cotton material and cut in a feminine fit. This is already a Blåkläder classic and it's perfect for wearing both on and off the job site.

*NOTE THESE ARE ALL EU SIZING RELABELED FOR US SIZING (I.E. STICKERS SHOW US MEDIUM AND TAG INSIDE THE GARMENT SHOWS EU LARGE)



3455

WOMEN'S 3D HOODIE

1158 100% cotton, french terry, 320 g/m²

4109 Autumn Green, **5909** Burned Red, **9900** Black
XS-XXL

Everyone loves a good Hoodie. Well, this one raises the bar. This bold new look is crafted in 100% cotton material and cut in a feminine fit. It also boasts an all-new 3D "Blåkläder" logo to help you stand out in the crowd. This hoodie is seriously cozy, but don't let it fool you, just like any Blåkläder item, it's ready for a hard day's work.

*NOTE THESE ARE ALL EU SIZING RELABELED FOR US SIZING (I.E. STICKERS SHOW US MEDIUM AND TAG INSIDE THE GARMENT SHOWS EU LARGE)



7119

WOMEN'S RIPSTOP SHORTS

1330 60% cotton, 40% polyester, ripstop 7 oz
2700 Stone, **9900** Black
 2-16

These Ripstop shorts were designed and built for women in the trades. They're designed for heavy work and all-day comfort. Upgrade your summer workwear with Stretch panels, CORDURA reinforcements and tons of pockets!



7174

WOMEN'S SERVICE SHORTS WITH STRETCH

1845 65% polyester, 35% cotton, plain, 5 oz
2799 Stone/Black, **4599** Dark olive green /black, **5999** Burned Red/Black,
8699 Dark navy/Black, **9699** Grey/Black, **9900** Black
 2-16

The 7174 Women's Service Shorts are the perfect balance of comfort and function for summer work. The stretch panels offer incredible flexibility and breathability while the cotton canvas offers structure and abrasion resistance for the toughest jobs. We made cargo shorts cool again...you're welcome.



NEW!

7134

WOMEN'S LIGHT CRAFTSMAN PANTS

1845 65% polyester, 35% cotton, plain, 5 oz
2700 Stone, **8600** Dark navy blue, **9900** Black
 4S-12S, 2R-16R, 6L-16L

Cut literally from the same cloth as our popular service pants, the 7134 is built for agile, high performance! Featuring a light-weight breathable fabric, stretch panels, kneepad pockets, right and left side cargo pockets and fitted for zip-on utility pockets, this light weight craftsman pant checks all the boxes and then some!



7153

WOMEN'S SERVICE STRETCH PANTS

1845 65% polyester, 35% cotton, plain, 5 oz
2799 Stone/Black, **4599** Dark olive green /black, **5999** Burned Red/Black,
8699 Dark navy/Black, **9699** Grey/Black, **9900** Black
 4S-12S, 2R-16R, 6L-16L

The 7153 Service pants are truly built for life! Made of a lightweight, breathable fabric, these pants are made for the service industry. Instead of CORDURA reinforcements, we strategically placed stretch panels to provide added comfort, flexibility, and breathability. But don't worry, there are still plenty of pockets. These pants aren't just made for work, they're made for life.



7169

WOMEN'S RIPSTOP PANT

1330 60% cotton, 40% polyester, ripstop 7 oz
2700 Stone, **9900** Black
 4S-12S, 2R-16R, 6L-16L

We took our top-selling ripstop pants and re-engineered them for women! The ripstop fabric is lightweight and comfortable with an unmatched durability of even the heaviest fabrics. Equipped with features like kneepad pockets and carpenter pockets on the leg makes these pants an essential tool for your workday. The gusseted crotch panel made from stretch material increases the flexibility and durability of the garment.



NEW COLORS!

7182

WOMEN'S 4-WAY STRETCH WORK PANTS

1644 93% polyamide, 7% elastane, Dobby, 4-way stretch, 295 g/m²
8699 Dark navy/Black, **9899** Darkgrey/black, **9900** Black
 4S-12S, 2R-16R, 6L-16L

The Stretch Craftsman Pant is the culmination of years of development and innovation. Designed for women, his pant offers 4-way stretch, CORDURA reinforcements, improved kneepad pockets, and detachable Utility pockets. This pant combines everything you could ever want in a pair of work pants.



7101

MATERNITY SERVICE PANTS WITH STRETCH

1830 63% polyester, 33% cotton, 4% elastoflex, twill, stretch, 245 g/m²
9900 Black
 XS-XL

Scratch-free service pants from Blåkläder's revolutionary maternity workwear collection. Crafted from 2-way-stretch fabric, the pants have 4-way-stretch panels on the rear, crotch and knees. Magnetic buttons and concealed features make these highly reliable pants awesome to wear when working in environments with sensitive surfaces. Loops at the waist for a belt, so that the optional nail pocket can be added.



CORDURA®-
REINFORCED
KNEEPOCKETS

NEW COLORS!

7990

WOMEN'S CRAFTSMAN PANT

1141 55% cotton, 30% polyester, 15% polyamide, denim coated, CORDURA® Denim stretch, 10 oz
4298 Forest Night/Black, **8999** Navy blue/Black, **9900** Black
 C32-C50, D18-D25

Durable craftsman's trousers in women's fit made of CORDURA® denim stretch fabric and stretch panels at the crotch for optimal range of motion. For optimal fit the trouser has an elasticized waistband and tapered legs. Bottom-loading knee pocket in CORDURA® stretch fabric suitable for maximum comfort even when kneeling.



7136

WOMEN'S FR PANT WITH UTILITY POCKETS

1550 88% cotton, 12% polyamide, twill flame resistant, 10 oz
2700 Stone, **8900** Navy blue, **9100** Light grey
 4S-12S, 2R-16R, 6L-16L

The 7136 Women's FR Pants are built for hard work and designed specifically for women. This pant features reinforced kneepad pockets, side pockets, and external utility pockets so you can get more done and be more comfortable while out in the field.

CERTIFICATION: ASTM F1506, CSA Z462-2021, ATPV rating: 13 cal/cm² CAT 2, NFPA 2112-2023, NFPA 70E-2021



7164

WOMEN'S VISIBILITY RIPSTOP PANT

1330 60% cotton, 40% polyester, ripstop 7 oz
9933 Black/Yellow Hi-viz
 4S-12S, 2R-16R, 6L-16L

A women's pant built for hard and agile work environments. This Ripstop pant is a game changer in the world of women's workwear. The mainly black fabric is lightweight and comfortable, with the unmatched durability of even the heaviest of fabrics letting you take every step on the job site with confidence knowing you are protected and seen.

CERTIFICATION: CSA Z96-15, class 2 when combined with vest, class 3 when combined with 2 or 3 uppers





US WOMEN'S SIZES

ALL MEASUREMENTS ARE IN INCHES

TOPS & PANTS

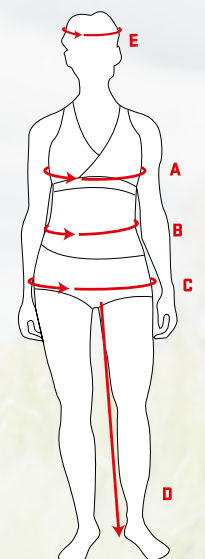
Size	XS	S		M		L	XL		XXL		3XL
Swedish size	C32	C34	C36	C38	C40	C42	C44	C46	C48	C50	C52
US/CA size	0	2	4	6	8	10	12	14	16	18	20
A. Chest	30	31½	33	34½	36	37½	39	40½	43	45½	48
B. Waist	25½	27	28	29	30½	32	33½	35	37	39½	42
C. Seat*	34	35½	36½	38	39	40½	42	43½	45½	47½	49½

*For pants: choose your size according to your widest point at seat.

Size	Short	Regular	Long
D: Inside leg	29	31	33

HEADWEAR

Size	One Size
E: Head Circumference	20½ - 25¼



ELITE

COLLECTION



ELITE COLLECTION

The ELITE collection consists of high-performance safety shoes and boots with very high durability and unsurpassed comfort. These shoes protect your feet in the best way and guarantee you comfortable working days, both now and in the future.



2251

ELITE SAFETY SHOE - VENTED

9900 Black
6-15

The Elite Safety Shoe is a high-performance safety shoe built for maximum durability and function. This shoe is made of premium full-grain leather with microfiber and TPU reinforcements to protect and support the foot in the best way. It also features a Composite toe cap, soft nail penetration protection, and Freelock quick lace system. Reflective details on the side as well as the heel offer a bit of added flash to keep you visible when needed. The insole, with anatomical support, is made of a smooth PU material covered with a textile surface with good moisture absorption. This is an ideal shoe for craftsmen in construction, plumbers, electricians, and maintenance. Features: - ASTM F2413-18 Puncture Resistant - Composite toe cap - Electrical Hazard Protection - Slip Resistant Outsole - Freelock quick lace system - Injection molded mid-sole.

CERTIFICATION: M/I/C EH PR



2255

ELITE 6" FREELock BOOT

7899 Brown/Black, **9900** Black
6-15

The Elite 6" Freelock boot is built for high performance and maximum durability. We packed all the premium features into one kick-ass boot. Made of premium full-grain leather with TPU reinforcements on the toe and heel to protect and support the foot in the best way possible. It also features a Composite toe cap, soft nail penetration protection, full shank, and Freelock quick lace system. The full waterproof membrane also ensures that the waterproof feature will never wear off or wash out. The insole, with anatomical support, is made of a smooth PU material covered with a textile surface with good moisture absorption. This is an ideal shoe for craftsmen in construction, plumbers, electricians, and maintenance. Features: - ASTM F2413-18 Puncture Resistant - Composite toe cap - Electrical Hazard Protection - Slip Resistant Outsole - Waterproof membrane - Freelock quick lace system - Injection molded mid-sole.

CERTIFICATION: M/I/C EH PR



2259

ELITE 6" SAFETY BOOT

9900 Black
6-15

The Elite 6" Safety boot is built for high performance and maximum durability at an affordable price point. This hybrid hiker style is a great fit for any tradesperson looking for a comfortable and stylish boot. Made of premium full-grain leather with TPU reinforcements on the toe and heel to protect and support the foot in the best way possible. It also features a Composite toe cap, soft nail penetration protection, and full shank in the mid-sole. The full waterproof membrane also ensures that the waterproof feature will never wear off or wash out. The insole, with anatomical support, is made of a smooth PU material covered with a textile surface with good moisture absorption. This is an ideal shoe for craftsmen in construction, plumbers, electricians, and maintenance. Features: - ASTM F2413-18 Puncture Protection - Composite toe cap - Electrical Hazard Protection - Slip Resistant Outsole - Waterproof membrane - Injection molded mid-sole.

CERTIFICATION: M/I/C EH PR



2257

ELITE 8" SAFETY BOOT

7899 Brown/Black, **9900** Black
6-15

The Elite 8" Safety boot is built for high performance in colder weather and maximum durability. The boot is made of premium full-grain leather with TPU reinforcements on the toe and heel to protect and support the foot in the best way possible. It also features a Composite toe cap, small nail penetration protection, a full nylon shank, and a cold isolation membrane inside the insole along with 200g Thinsulate TM insulation. The full waterproof membrane also ensures that the waterproof feature will never wear off or wash out. The insole, with anatomical support, is made of a smooth PU material covered with a textile surface with good moisture absorption. This is an ideal shoe for outdoor work in mild to cold conditions. Features: - ASTM F2413-18 Puncture Resistant - Composite toe cap - Electrical hazard protection - Slip-resistant outsole - 200g Thinsulate TM - Quick-zip side access - A wide, comfortable fit - Waterproof membrane - Cold isolation membrane - Injection molded mid-sole.

CERTIFICATION: M/I/C EH PR

STORM

COLLECTION



STORM COLLECTION

The STORM collection was crafted to perform in the harshest conditions. These boots offer unsurpassed comfort and protection, along with Thinsulate insulation and advanced traction for cold and wet environments.



2260

STORM 6" SAFETY BOOT

7899 Brown/Black
6-15

The Storm 6" Safety boot is built for high performance and comfort in extreme cold. The boot is made of premium full-grain leather with TPU reinforcements on the toe and heel along with a thick wool/poly lining inside for added comfort and warmth. It also features a Composite toe cap, small nail penetration protection, a full nylon shank, and a cold isolation membrane inside the insole along with 200g Thinsulate™ insulation. The full waterproof membrane also ensures that the waterproof feature will never wear off or wash out. The Storm collection is designed with our Nitrile/PU outsoles to provide added grip in extreme conditions including, cold, heat and chemical exposure. The insole, with anatomical support, is made of a smooth PU material covered with a textile surface with good moisture absorption. This is an ideal shoe for outdoor work in mild to cold conditions. Features: - ASTM F2413-18 Puncture Protection - Composite toe cap - Electrical hazard protection - Slip-resistant outsole - Nitrile/PU Extreme grip outsole - 200g Thinsulate™ - A wide, comfortable fit - Waterproof membrane - Cold isolation membrane - Injection molded mid-sole.

CERTIFICATION: M/I/C EH PR



2262

STORM 6" FREELock BOOT

9999 Black/Black
6-15

The Storm 6" FreeLock boot is built for high performance and comfort in extreme cold. We packed all the premium features into one kick-ass boot. It's made of premium full-grain leather with TPU reinforcements on the toe and heel along with a thick wool/poly lining inside for added comfort and warmth. It also features a Composite toe cap, small nail penetration protection, a full nylon shank, and a cold isolation membrane inside the insole along with 200g Thinsulate™ insulation and our FreeLock quick lace system. The full waterproof membrane also ensures that the waterproof feature will never wear off or wash out. The Storm collection is designed with our Nitrile/PU outsoles to provide added grip in extreme conditions including, cold, heat and chemical exposure. The insole, with anatomical support, is made of a smooth PU material covered with a textile surface with good moisture absorption. This is an ideal shoe for outdoor work in mild to cold conditions. Features: - ASTM F2413-18 Puncture Protection - Composite toe cap - Electrical hazard protection - Slip-resistant outsole - Nitrile/PU Extreme grip outsole - 200g Thinsulate™ - A wide, comfortable fit - Waterproof membrane - Cold isolation membrane - Injection molded mid-sole - FreeLock quick lace system.

CERTIFICATION: M/I/C EH PR



2263

STORM 8" WINTER BOOT

7899 Brown/Black
6-15

The Storm 8" Winter boot is built for high performance and comfort in extreme cold. It's made of premium full-grain leather with TPU reinforcements on the toe and heel along with a thick wool/poly lining inside for added comfort and warmth. It also features a Composite toe cap, small nail penetration protection, a full nylon shank, and a cold isolation membrane inside the insole along with 200g Thinsulate™ insulation and our FreeLock quick lace system. The full waterproof membrane also ensures that the waterproof feature will never wear off or wash out. The Storm collection is designed with our Nitrile/PU outsoles to provide added grip in extreme conditions including, cold, heat and chemical exposure. The insole, with anatomical support, is made of a smooth PU material covered with a textile surface with good moisture absorption. This is an ideal shoe for outdoor work in mild to cold conditions. Features: - ASTM F2413-18 rating - Composite toe cap - Electrical hazard protection - Puncture protection - Slip-resistant outsole - Nitrile/PU Extreme grip outsole - 200g Thinsulate™ - Thick Wool/Poly lining - A wide, comfortable fit - Waterproof membrane - Cold isolation membrane - Injection molded mid-sole.

CERTIFICATION: M/I/C EH PR

CSA CERTIFICATIONS *COMING SOON*



THE CSA COLLECTION

The ELITE and STORM collections will soon be available as a dual certification ANSI/CSA. Experience a revolution in comfort and durability with the highest safety standards. Coming to a store near you!





11

BASE LAYER

THE 3-LAYER PRINCIPLE:

ADAPT YOUR CLOTHING TO YOUR LEVEL OF EXERTION

When working hard it's important to keep warm and dry. The 3-layer principle means regulating your body temperature by adding or removing garments as the weather or work dictates.

TRANSPORT - LAYER 1

This layer wicks away moisture from the skin.

An undergarment of wool or channel-stitched synthetic material absorbs moisture and wicks it away. Wool also regulates body temperature well. In cold weather it warms, and when the body heats up it cools. That means it is perfect to use even in clothing for warm environments.

Wool is famed for its self-cleaning properties.

The wool's natural creatine works like a natural deodorant, keeping your garment fresher for longer.

INSULATE - LAYER 2

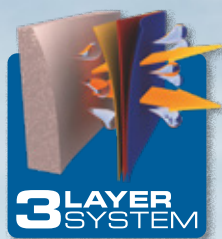
The intermediate layer insulates while wicking the moisture further away. As the temperature drops, the intermediate layer insulates against cold and lets you maintain your body heat. If you get hot and sweaty, regulate your temperature by lightening your intermediate layer. Put on a flannel shirt, a fleece garment, or an artificial fiber undergarment.

Our fleece garments combine style and function. Fleece warms when it's cold. It's also easy to wash, dries quickly and wicks away moisture from the body.

PROTECT - LAYER 3

This is the shield that protects you from cold, rain and wind. The breathable function releases moisture from inside so it can evaporate on the outside. The material is lightweight, easy to care for, has taped seams and an especially durable surface layer.

Real outerwear for hard work should have: Hidden cuffs at the end of sleeves and legs/Snow locks over zips/roomy, easy-access outer pockets/Warming fleece lining in front pockets/Drawstring for adjustable waist/Removable lining/Zip all the way up the collar.



WARM

°F +25
-20

°C -5
-30



4897

WARM BASE LAYER - TOP

1732 100% Merino wool, 6 oz

9699 Grey/Black

XS-5XL

This warming base layer keeps the body warm and dry during cold weather. Warming zones located on shoulders, arms, back, behind and sides where you freeze the most. The base layer is made of 100% merino wool that provides superior insulation and humidity transportation qualities to keep you warm and dry. Recommended temperature 25°F to -20°F. Don't freeze while working, keep warm and dry in cold environment.

XWARM

°F -5
-30

°C -20
-35



4894

XWARM BASE LAYER - TOP

1706 70% Merino wool, 30% polypropylene, terry knitted, wicking, moisture management, 8 oz

9900 Black

XS-5XL

This multi-functional clothing has everything one could ask of a base layer. XWARM regulate your temperature while keeping you warm and dry even in extreme cold. The material consists of an inner layer of channel knitted polypropylene which transport humidity away from the body and to the outer layer, where it is absorbed by the merino wool. Recommended temperature -30°F to -5°F. Keeping you warm and dry even during stationary work in the biting cold.

WARM

°F +25
-20

°C -5
-30



1849

WARM BASE LAYER - BOTTOM

1732 100% Merino wool, 6 oz

9699 Grey/Black

XS-5XL

This warming base layer keeps the body warm and dry during cold weather. The base layer is made of 100% merino wool that provides superior insulation and humidity transportation qualities to keep you warm and dry. Recommended temperature 25°F to -20°F. Don't freeze while working, keep warm and dry in cold environment.

XWARM

°F -5
-30

°C -20
-35



1894

XWARM BASE LAYER - BOTTOM

1706 70% Merino wool, 30% polypropylene, terry knitted, wicking, moisture management, 8 oz

9900 Black

XS-5XL

This multi-functional clothing has everything one could ask of a base layer. XWARM regulate your temperature while keeping you warm and dry even in extreme cold. The material consists of an inner layer of channel knitted polypropylene which transport humidity away from the body and to the outer layer, where it is absorbed by the merino wool. Recommended temperature -20°F to -5°F. Keeping you warm and dry even during stationary work in the biting cold.

12

ACCESSORIES





2155

ZIPPER PULL

3300 Yellow, **4200** Green, **5500** Red highviz, **8500** Cornflower blue, **9400** Grey, **9700** Dark Grey
One size

Replaceable zip pullers available in several different colors, enabling you to brand your workwear and your company.

4034

BELT

3300 Yellow, **4200** Green, **5300** Orange, **5500** Red highviz, **5600** Red, **8000** Ocean Blue, **8500** Cornflower blue, **9400** Grey, **9700** Dark Grey, **9900** Black
One size

Adjustable belt with metal buckle. Available in several different colors, enabling you to brand your workwear and your company.

SMALL DETAILS BIG DIFFERENCE

Building and representing a strong brand is all about the details. We don't skip them and neither should you. Show your customers you care with a unified look and feel throughout your team. Whether it's a belt, a zipper pull, or custom printing, we've got your back.

FORM-FITTING KNEE PADS

Knee injuries are all too common on the construction site. Most injuries are caused by poor ergonomics and inadequate protection during strenuous or dangerous tasks. Years of abuse lead to joint replacements, surgeries and time lost. Take care of your body with our built in kneepad system. Work smarter, so you can live life longer.





4057

FOAM KNEEPADS

1202 Polyeten
9900 Black
One size

The next generation of Blaklader kneepads starts here. A lightweight and supple kneepad if you need flexible protection when you occasionally work on your knees. The pad forms to the shape of your knee and is suitable for working on flat surfaces. This is a standard foam kneepad built to fit into ANY of our pants that are equipped with a kneepad pocket as well as the limited edition kneepad sleeves.

CERTIFICATION: EN 14404 2004+A1 2010, type 2, level 0, Certified with trousers marked S1G, F1G and M1G



4048

REINFORCED KNEEPAD

1203 Polyethene
9956 Black/Red
One size

The next generation of Blaklader kneepads is changing the face of workwear. Hard work doesn't have to leave you in pain. The strong front side provides effective protection against sharp objects. The pad is soft on the inside so that it fits comfortably in order to ensure your knees are in the right position. These 4048 kneepads are designed to work with our top-load knee pad pocket to easily upgrade the 1699 or the 1691 work pants as well as the limited edition 4067 kneepad sleeves.



4058

WIDE REINFORCED KNEEPADS

1203 Polyethene
9956 Black/Red
One size

A wider version of the 4048, these professional kneepads are made with EVA material, specifically designed for professional craftsmen working long hours on their knees. The strong front side provides effective protection against sharp objects. The pad is soft on the inside so that it fits comfortably in order to ensure your knees are in the right position. The 4058 kneepads are designed to fit with any of our pants equipped with a kneepad pocket as well as the limited edition 4067 kneepad sleeves.

CERTIFICATION: EN 14404 2004+A1 2010, type 2, Level 1, Certified with trousers marked M1G and H1G



4032

GEL KNEEPAD

1207 100% Synthetic rubber
9900 Black
One size

A solid knee pad suitable for those who work laying floors or tiling. The pad is comfortable and flexible, made of 25 mm gel material with an extra wide fit which increases both comfort and provides effective protection when you are kneeling for long hours. The pad is soft on the inside for extra comfort and easily fits to the shape of your trousers.

CERTIFICATION: EN 14404 2004+A1 2010, type 2, Level 1, Certified with trousers marked M1G and H1G

KNEE PADS ARE SOLD SEPARATELY



4067

KNEEPAD SLEEVES

1933 100% polyester, CORDURA® Stretch 320g/m²
9900 Black
XS/S, M/L, XL/XXL, XXL/3XL

A summer kneepad solution that is worthy of the Blaklader name. These sleeves comfortably hold a 4048, 4057 or 4058 kneepad for those days when you just need to wear shorts. The CORDURA® stretch kneepad pocket is flexible and comfortable with airy mesh on the back for extra ventilation. But don't worry, it still boasts the same durability you have come to know and love. Choose from 3 different sizes and adjust the top strap to dial in that perfect fit. - Foam kneepads are NOT included

CERTIFICATION: EN 14404 2004+A1 2010, type 1, level 1 together with knee protection art 4027, EN 14404 2004+A1 2010, type 1, level 0 together with knee protection art 4057



2009

RAIN HAT

2003 100% polyester, polyurethane coated, wind and waterproof, 7 oz

3300 Yellow
M/L, XL/XXL

Protect your luscious locks with a rain hat from Blaklader. This Hi-Vis, polyester PU coated hat brings complete protection from wind, rain or snow. Stays secure with adjustable cord under your chin.

CERTIFICATION: The fabric is certified according to EN ISO 20471, applies to colour 3300 and 5300



2007

HI-VIS REFLECTIVE BEANIE

4001 100% acrylic

3300 Yellow
One size

Hi-vis beanie with knitted reflex lines. No bells and whistles. This hat keeps it simple, functional and you visible on the jobsite.

CERTIFICATION: Hi-vis certification not applicable



9211

BEANIE LIMITED EDITION

3709 Honey Gold, **4000** Rust, **4209** Forest Night, **8209** Blue limited, **9000** Grey melange, **9900** Black
One size

Make a statement with the Blåkläder Beanie, a stylish and functional accessory for chilly days. Crafted from soft and warm knit fabric, this beanie offers superior comfort and insulation. The stretchy construction ensures a snug and comfortable fit, while the array of available colors allows you to express your unique style. This knitted beanie is the perfect companion for the day ahead.

REFLECTIVE SEAMS



2062

HARDWARE HAT

8900 Navy blue, **9400** Grey, **9900** Black
One size

Winter Hardware hats are fleece-lined skull caps made to fight the most frigid winter days.

2062

HARDWARE HAT

8900 Navy blue, **9400** Grey, **9900** Black
One size

Winter Hardware hats are fleece-lined skull caps made to fight the most frigid winter days.



2029

HARDWARE WOOL BEANIE

1734 100% Merino wool, single-jersey, 6oz

9800 Dark grey
One size

We scoured the globe for the finest and softest wool of any sheep. Made from Merino wool, the 2029 hardware beanie is breathable and static resistant for top of the line comfort.



2021

KNIT HAT

9900 Black
One size

Blaklader's comfortable knitted hat, to keep you warm and working!



2058

FLEX FIT BASEBALL CAP

1372 98% Cotton 2% Spandex
9900 Black
 S/M, L/XL

A simple classic flex fit baseball cap. On or off the job site, this hat will let everyone know where you stand.



2059

BASIC CAP

1350 100% cotton
9900 Black
 One size

Show your team spirit somewhere else. This black baseball cap belongs on the jobsite. Adjustable strap on the back of the hat with custom Blåkläder embroidery on the back.



2075

TRUCKER CAP

3709 Honey Gold, **5909** Burned Red, **8209** Blue limited,
8600 Dark navy blue, **9900** Black
 One size

Trucker cap in baseball model that is color-matched with Blåkläder's t-shirts and hoodies with 3D print. The cap is one size but adjustable with a snapback.



2054

BASEBALL CAP

2870 95% polyester, 5% wool, twill 2/1, 9oz
9000 Grey melange
 One size

A baseball cap should be more than a fashion statement. The 2054 not only looks great in grey Melange, but outperforms your old worn-out cap with its wool material. Try this one on for size.



NEW!

2171

TOOL POCKETS ZIPPER & PRESS STUD FASTENING

1948 100% polyamide, CORDURA®
9900 Black
 S/M, L/XL

Detachable tool pockets, double reinforced with CORDURA® at the bottom for higher safety and durability. Sold separately, to fit 1622 and 1615.



4020

HAMMER HOLDER

9900 Black
 One size

Practical hammer loop complete with a fabric loop and durable metal hammer holder.



4033

WEB BELT - WITH BLÅKLÄDER PRINT

9900 Black
 One size

This adjustable length, textile belt will have you representing Blåkläder wherever you go. The metal buckle comes in antique silver with the Blåkläder logo engraved in the front. This belt also includes Blåkläder print around the band and measures roughly 49 inches long, 1.5 inches wide.



4013

STRETCH WEB BELT - WITH EMBROIDERED LOGO

9900 Black
 One size

The heavy-duty webbed belt has a logo embroidered along the webbing and a durable bronze buckle. When your workpants are loaded down with tools, you'll need something like this to keep them up.



4014

STRETCH WEB BELT

9900 Black
 One size

For a simple and professional look, the silver belt buckle has a small Blåkläder logo on a polished silver buckle. It's the perfect choice for tradesmen who spend a lot of time in front of clients.



2513

WOOL SOCK THIN

1083 47% wool, 41% polyamide, 12% elastane

9991 Black melange

5-12

Thin all-around sock in wool with a fantastic fit. Thanks to the wool's ability to regulate the temperature and keep warm in wet and dry conditions, the sock can be worn all year round during indoor and outdoor activities. Also, the wool has a natural anti-odor function.



2514

WOOL SOCK

1084 47% wool, 43% polyamide, 10% elastane

9991 Black melange

5-12

Wool sock with a fantastic fit. Reinforcement and insulating terry in the heel, sole and toe for increased durability and comfort. Thanks to the wool's ability to regulate temperature and keep warm in wet and dry conditions, it is the best material for long-term work outdoors in low temperatures. Also, wool has a natural anti-odor function.



2515

COTTON SOCKS 3-PACK

1088 80% cotton, 18% polyamide, 2% elastane

9998 Black/Dark grey

5-12

Quality staple sock with terry knit in heel, sole and toe for comfort and shock absorption. Elasticated arch support. Cotton ankle sock for work or leisure. Comes in a pack of 3 pairs.



2516

SOCK DRY 2-PACK

1102 55% polyamide, 42% polypropylene, 3% elastane

9900 Black

5-12

Function sock in Dryarn® with effective moisture wicking to keep your feet dry whatever the temperature, both indoors and out. Pique-knit sections at selected points for extra ventilation, and reinforcement at the toe, sole and heel for maximum durability. The arch support and tight fit support the foot and prevent the sock from sliding down.



NEW!

B110

REPLACEMENT LACES

9900 Black, **9953** Svart/Orange Highviz

45In-63In

Replacement laces for all 6" or 8" boots.



B112

FREELOCK REPAIR KIT FOR MID-CUT BOOTS

9996 Black/Mid grey

One size

Complete repair kit for changing the FreeLock system on Blåkläder's safety boots.



B113

FREELOCK REPAIR KIT FOR LOW-CUT SHOES

9996 Black/Mid grey

One size

A full FreeLock repair kit for Low-cut shoes.

SCAN TO
READ OUR
POLICIES



SCAN TO
SET UP A
RETURN/
CLAIM





www.blaklader.com

Blaklader USA

Blaklader LLC Main Office
6311 Porter Road, Suite 1, Sarasota, FL 34240
Tel: (800) 948 6452
email: info.usa@blaklader.com

Blaklader Canada

201 Millway Ave, Unit 22
Concord, ON L4K 5K8
Tel: 647-946-4243
email: info.canada@blaklader.com

FOLLOW US ON SOCIAL MEDIA



@blakladerna



BlakladerUS
BlakladerCA



BlakladerNA



BlakladerNA



VISIT OUR
WEBSITE



VISIT OUR
WEBSITE

